

CYUSB3KIT-001 EZ-USB® FX3 DEVELOPMENT KIT QUICK START GUIDE

1

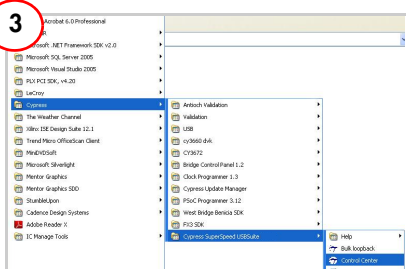


Install Software

1. Insert the kit CD into the CD/DVD-ROM drive of your PC.
2. Install the FX3 SDK and Cypress SuperSpeed USBSuite software.

Note: For first time users, Cypress recommends accepting the default options at each stage of the setup.

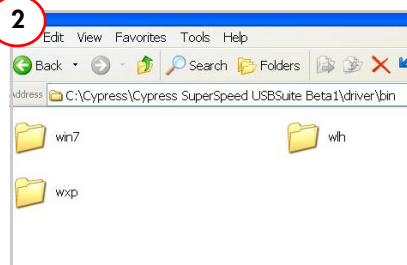
3



Run Cyconsole EZ-USB

Run Cypress USB Control Center by clicking Start > All Programs > Cypress > Cypress SuperSpeed USBSuite > Control Center

2



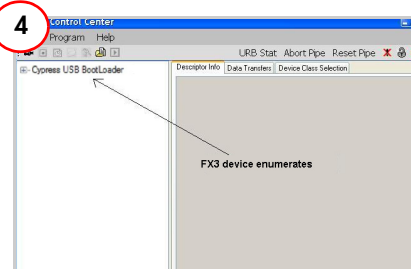
Install Driver

1. Connect the board to your PC using the USB cable provided with the kit.
2. Follow the prompts to install the driver.

The driver is located in C:\Cypress\Cypress SuperSpeed USBSuite\driver\bin. Select a driver based on the operating system.

Note: The Cypress Generic USB Driver is not a digitally signed driver and Windows may display a warning. Click Continue Anyway.

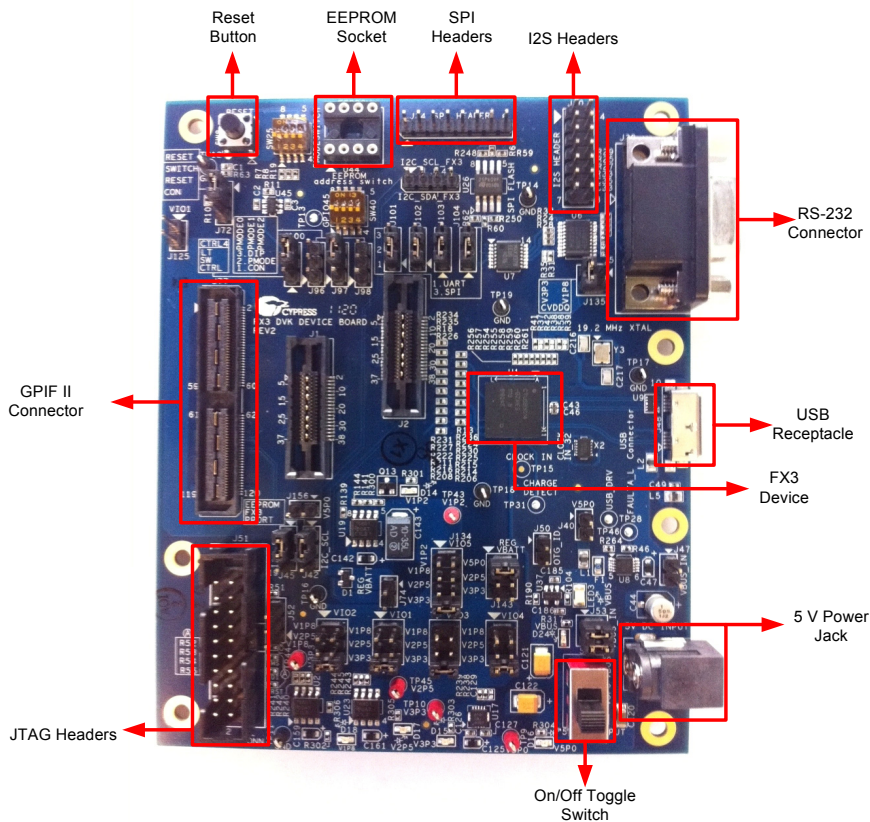
4



Confirm Successful Enumeration

1. The USB Control Center window opens.
2. The text in the left column reads "Cypress USB BootLoader".

FX3 Development Board Details



For the latest information about this kit, visit
www.cypress.com

