

This is the version of Windows I am using:



Control Panel > System and Security > System

Control Panel Home

View basic information about your computer

Windows edition

Windows 8.1 Pro

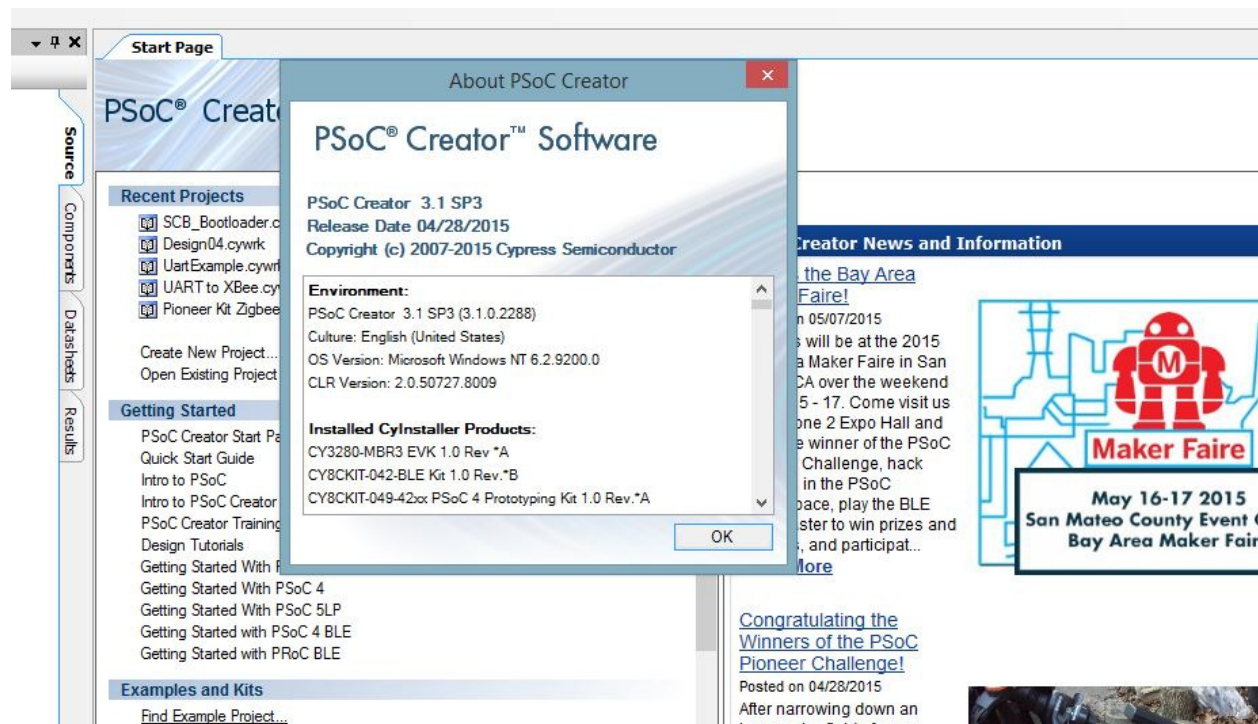
© 2013 Microsoft Corporation. All rights reserved.

[Get more features with a new edition of Windows](#)

System

Processor:	AMD A8-6500 APU with Radeon(tm) HD Graphics	3.50 GHz
Installed memory (RAM):	10.0 GB (9.43 GB usable)	
System type:	64-bit Operating System, x64-based processor	
Pen and Touch:	No Pen or Touch Input is available for this Display	

This is the version of PSoC Creator I am using:



Start Page

PSoC® Creator™

Recent Projects

- SCB_Bootloader.c
- Design04.cywrk
- UartExample.cywrk
- UART to XBee.cywrk
- Pioneer Kit Zigbee

Create New Project...

Open Existing Project...

Getting Started

- PSoC Creator Start Page
- Quick Start Guide
- Intro to PSoC
- Intro to PSoC Creator
- PSoC Creator Training
- Design Tutorials
- Getting Started With PSoC 4
- Getting Started With PSoC 4
- Getting Started With PSoC 5LP
- Getting Started with PSoC 4 BLE
- Getting Started with PSoC BLE

Examples and Kits

- Find Example Project...

About PSoC Creator

PSoC® Creator™ Software

PSoC Creator 3.1 SP3
Release Date 04/28/2015
Copyright (c) 2007-2015 Cypress Semiconductor

Environment:

PSoC Creator 3.1 SP3 (3.1.0.2288)
Culture: English (United States)
OS Version: Microsoft Windows NT 6.2.9200.0
CLR Version: 2.0.50727.8009

Installed Cylnstaer Products:

- CY3280-MBR3 EVK 1.0 Rev.*A
- CY8CKIT-042-BLE Kit 1.0 Rev.*B
- CY8CKIT-049-42xx PSoC 4 Prototyping Kit 1.0 Rev.*A

OK

Creator News and Information

[the Bay Area Maker Faire!](#)

on 05/07/2015

will be at the 2015 a Maker Faire in San CA over the weekend 5 - 17. Come visit us one 2 Expo Hall and e winner of the PSoC Challenge, hack in the PSoC space, play the BLE ster to win prizes and , and participat...

[Congratulating the Winners of the PSoC Pioneer Challenge!](#)

Posted on 04/28/2015

After narrowing down an

Maker Faire

May 16-17 2015
San Mateo County Event Center
Bay Area Maker Fair

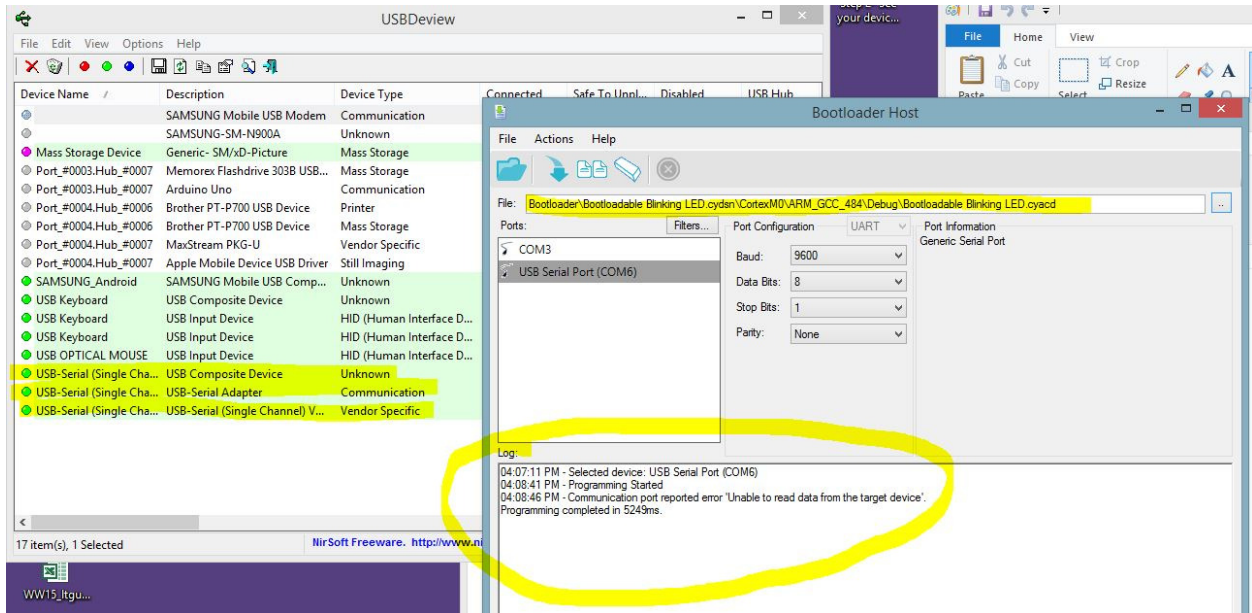
The following is what shows up in the USBDevice viewer:

Device Name	Description	Device Type	Connected	Safe To Unpl...	Disabled	USB Hub
	SAMSUNG Mobile USB Modem	Communication	No	Yes	No	No
	SAMSUNG-SM-N900A	Unknown	No	Yes	No	No
Mass Storage Device	Generic- SM/xD-Picture	Mass Storage	Yes	No	No	No
Port_#0003.Hub_#0007	Memorex Flashdrive 303B USB...	Mass Storage	No	Yes	No	No
Port_#0003.Hub_#0007	Arduino Uno	Communication	No	Yes	No	No
Port_#0004.Hub_#0006	Brother PT-P700 USB Device	Printer	No	Yes	No	No
Port_#0004.Hub_#0006	Brother PT-P700 USB Device	Mass Storage	No	Yes	No	No
Port_#0004.Hub_#0007	MaxStream PKG-U	Vendor Specific	No	No	No	No
Port_#0004.Hub_#0007	Apple Mobile Device USB Driver	Still Imaging	No	Yes	No	No
SAMSUNG_Android	SAMSUNG Mobile USB Comp...	Unknown	Yes	Yes	No	No
USB OPTICAL MOUSE	USB Input Device	HID (Human Interface D...	Yes	Yes	No	No
USB-Serial (Single Cha...	USB Composite Device	Unknown	Yes	Yes	No	No
USB-Serial (Single Cha...	USB-Serial Adapter	Communication	Yes	Yes	No	No
USB-Serial (Single Cha...	USB-Serial (Single Channel) V...	Vendor Specific	Yes	Yes	No	No

This shows Bootloader Host side by side with USBDevice view of Com Port (COM6)

The image shows two windows side-by-side. The left window is the USBDevice viewer, displaying the same table of USB devices as above. The right window is the Bootloader Host configuration window. It shows the 'Ports' section with 'COM3' and 'USB Serial Port (COM6)' listed. The 'Port Configuration' section is set to 'UART' with the following settings: Baud: 9600, Data Bits: 8, Stop Bits: 1, Parity: None. The 'Port Information' section shows 'Generic Serial Port'. The status bar at the bottom of the Bootloader Host window reads 'Ready'.

Here is the error message that I get when I try to push the new code:



Here is how the Com port looks like in Control Panel:

