

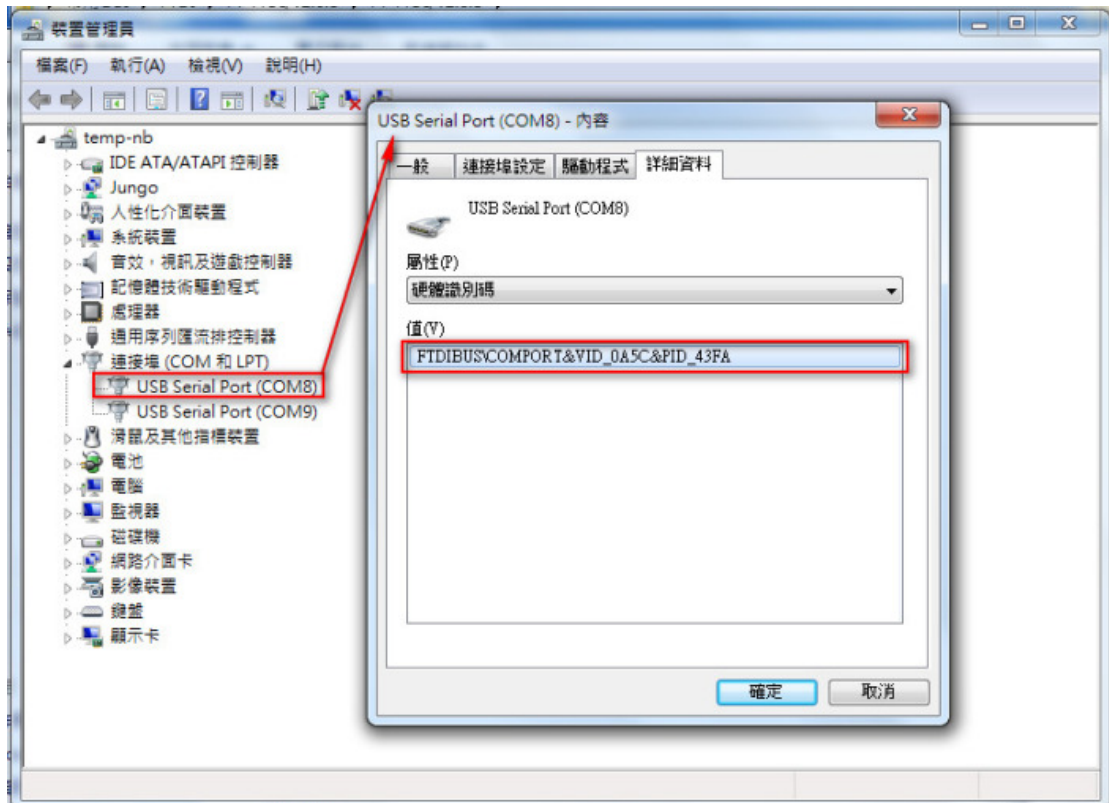
Prepare software :

.Net Framework 4.0 → dotNetFx40_Full_x86_x64

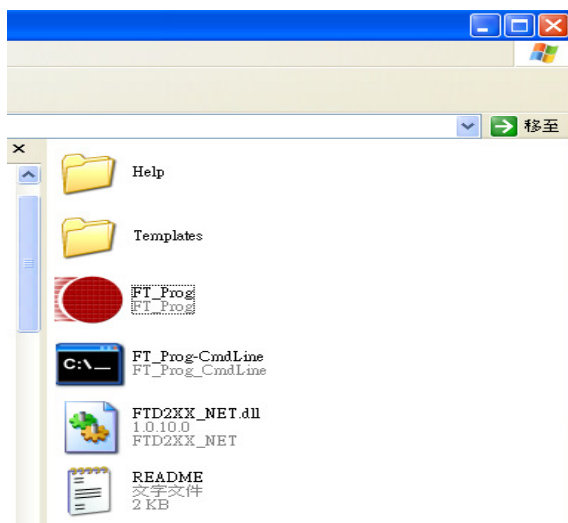
CDM 2.08.24 WHQL Certified → FTDI FT2232 driver

FTDI EEPROM program tool → FT_Prog_v2.6.8

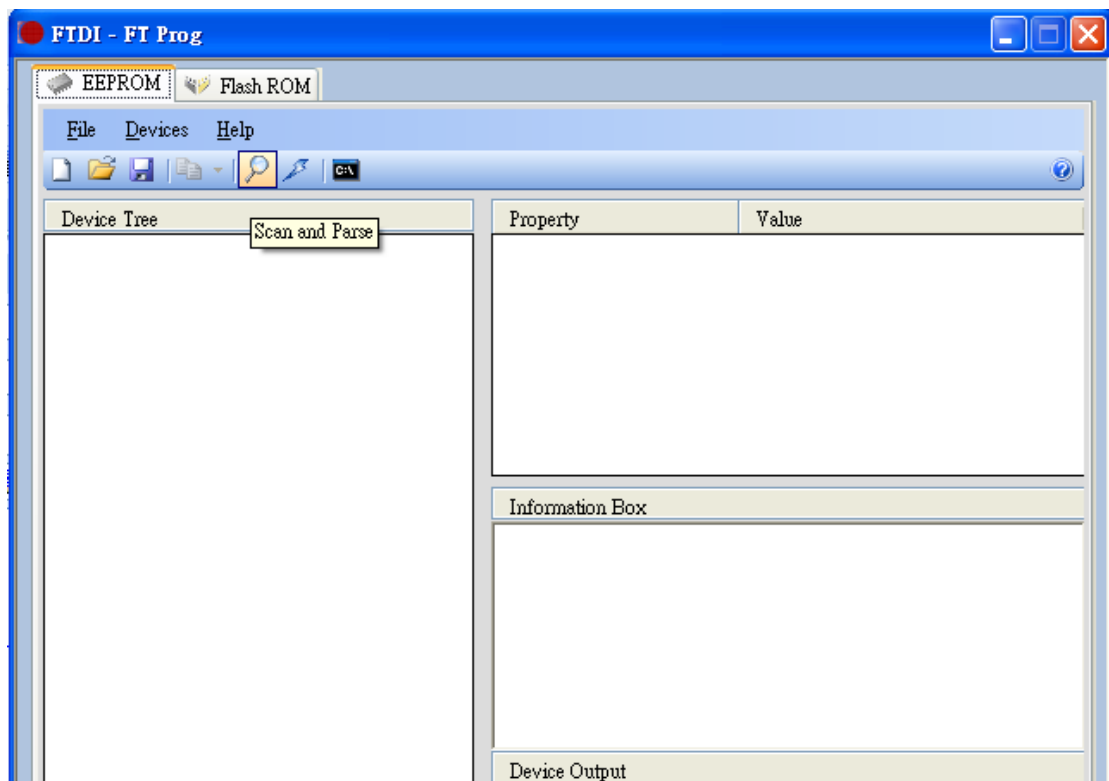
1. Plug FTDI FT2232 device to PC and install default FT2232 driver
2. You will see two USB Serial Port in device manager after you install CDM 2.08.24 driver.



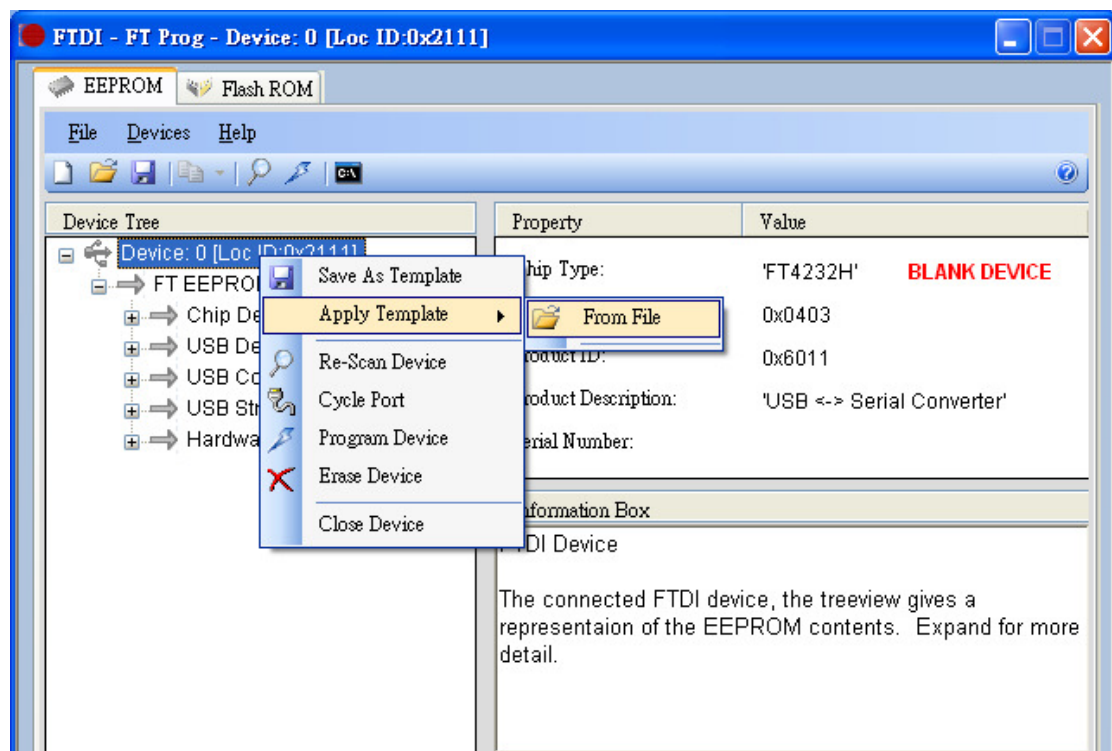
3. Double click "FT_Prog" to Open FT_Prog_v2.6.8 tool. Please install .Net Framework 4.0 first if FT_Prog_v2.6.8 open failed.



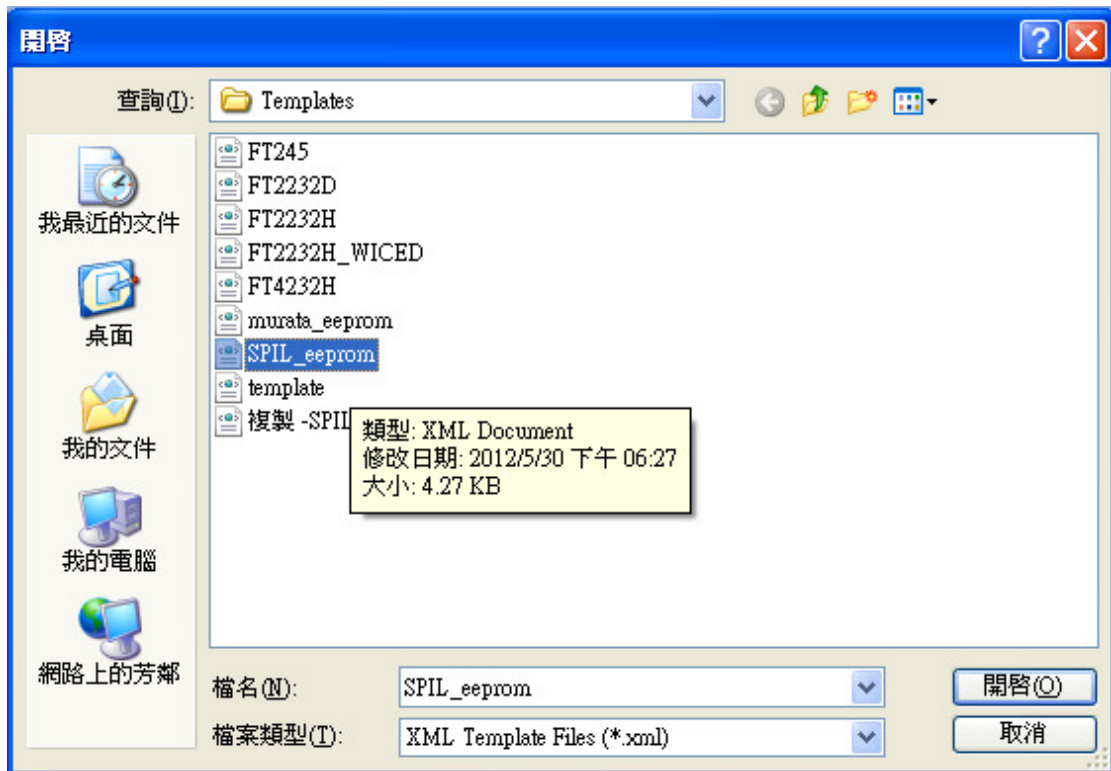
- Press "Scan and Parse" button to find FT2232 EEPROM.



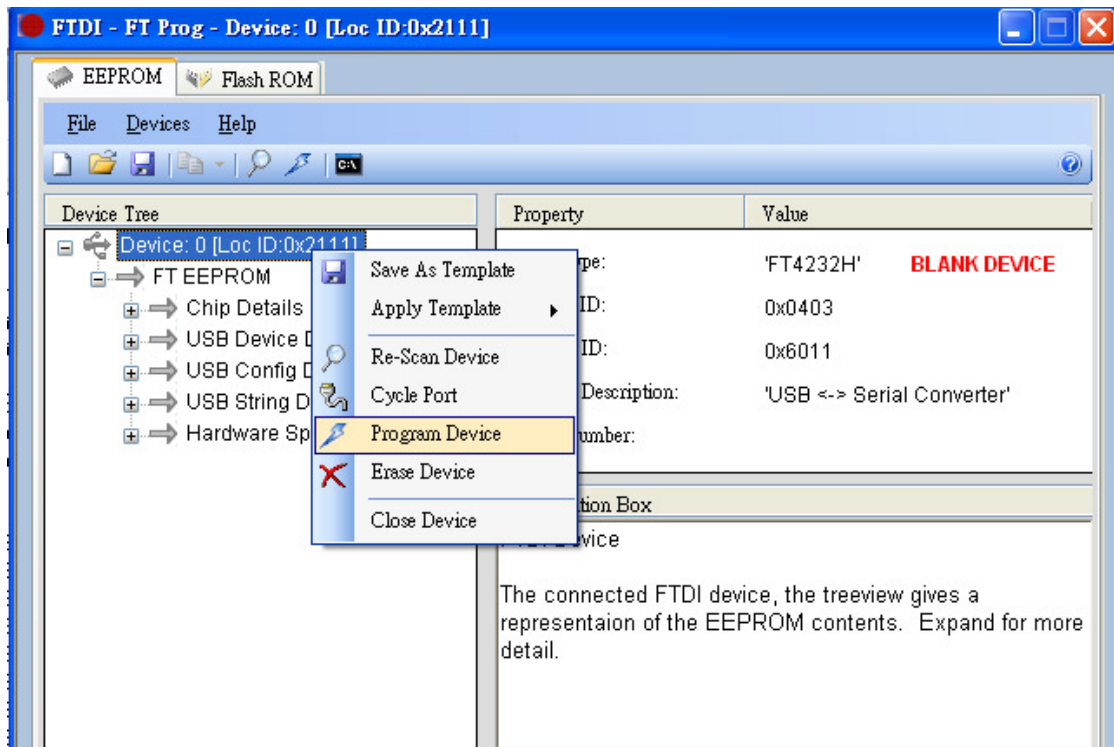
- If device can be find, select detected device and click mouse right key, select "Apply template → From File"



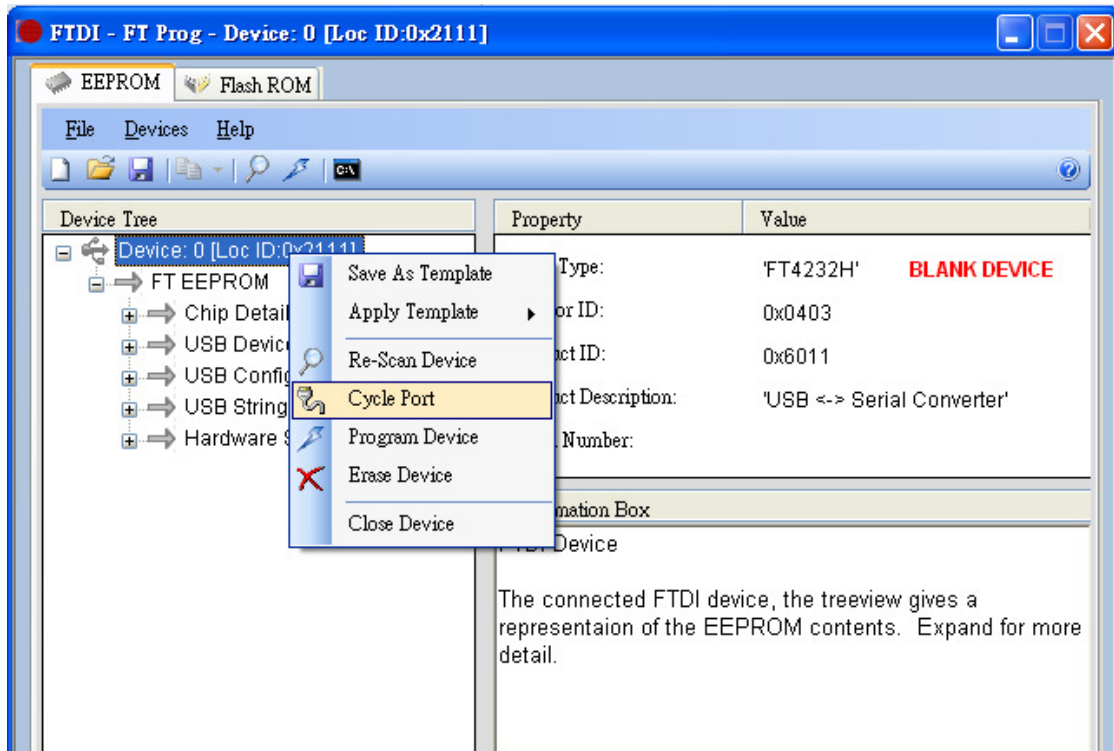
6. Select "SPIL_eeprom" template file to append setting:



7. After append template, select detected device and click mouse right key, select "Program Device"



- After program finish, select detected device and click mouse right key, select "Cycle Port" to re-scan device.



- Then you can find the WICED-JTAG and WICED serial port.

