

Installing new SDK while keeping the older SDK

View of the initial WICED SDK installation. Notice I have created a Top Level folder 'Broadcom_WICED' and placed this directly on my C: drive rather than letting the installer install the IDE/SDK into the default 'users' directory. This top level folder contains both my BTLE and WIFI SDK's in their respective folders BTLE and WIFI.

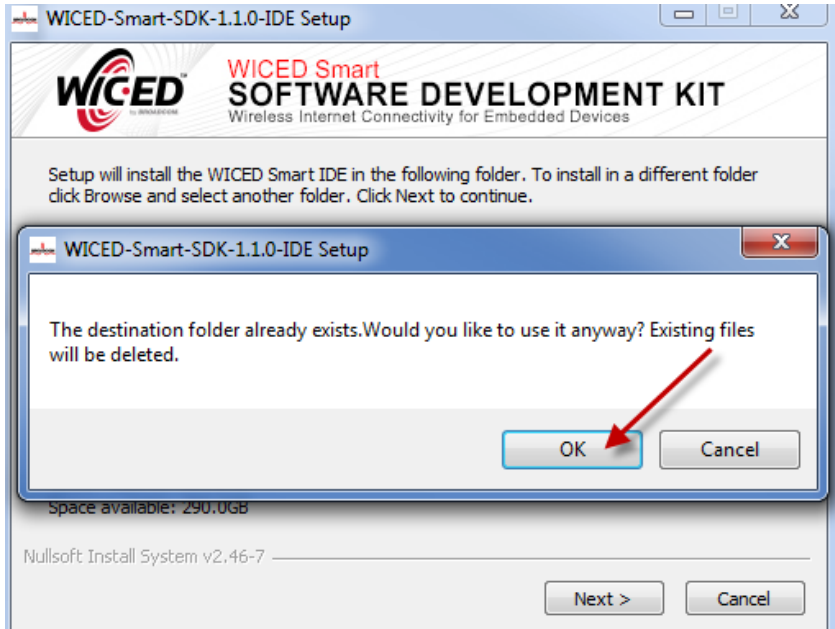


Select the same directory as the original directory. It will install over the prior Eclipse IDE installation. This should not pose any problems.

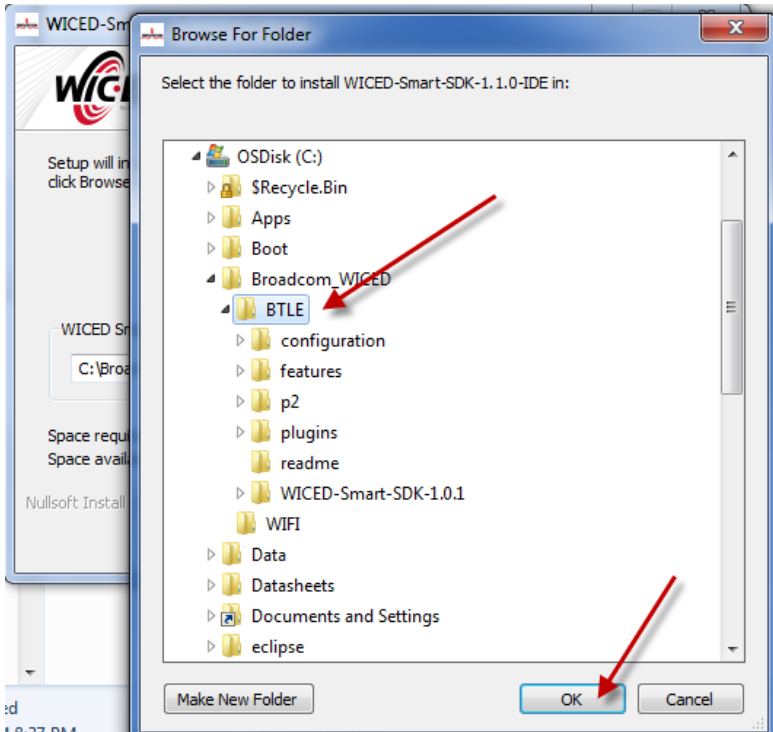


Continued...

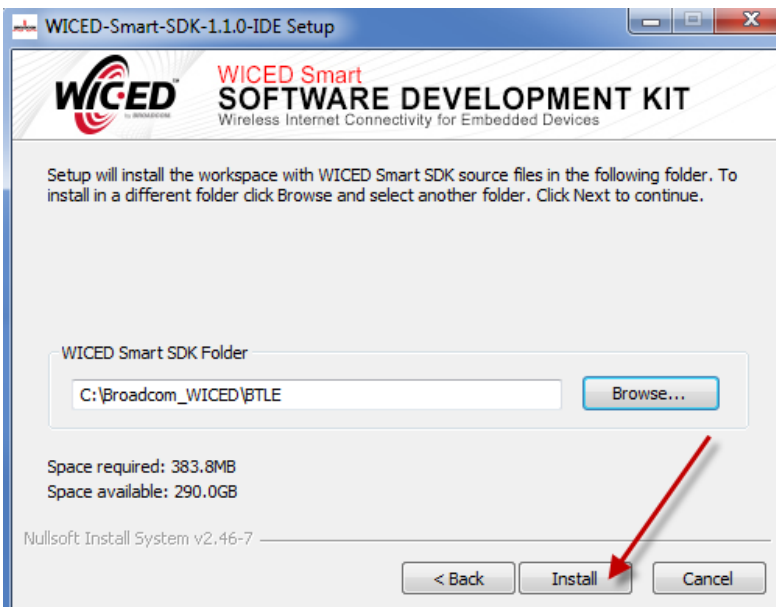
The installer will ask you if you want it to overwrite the existing files...click 'OK'.



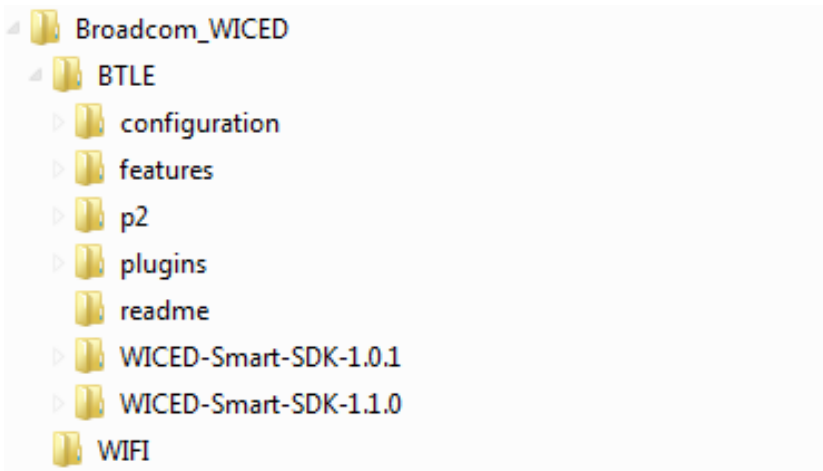
Next the installer will ask you where to place the new SDK. Chose the same Directory the other SDK is installed in. The IDE and SDK get installed into the same directory...click 'OK'



Continued...

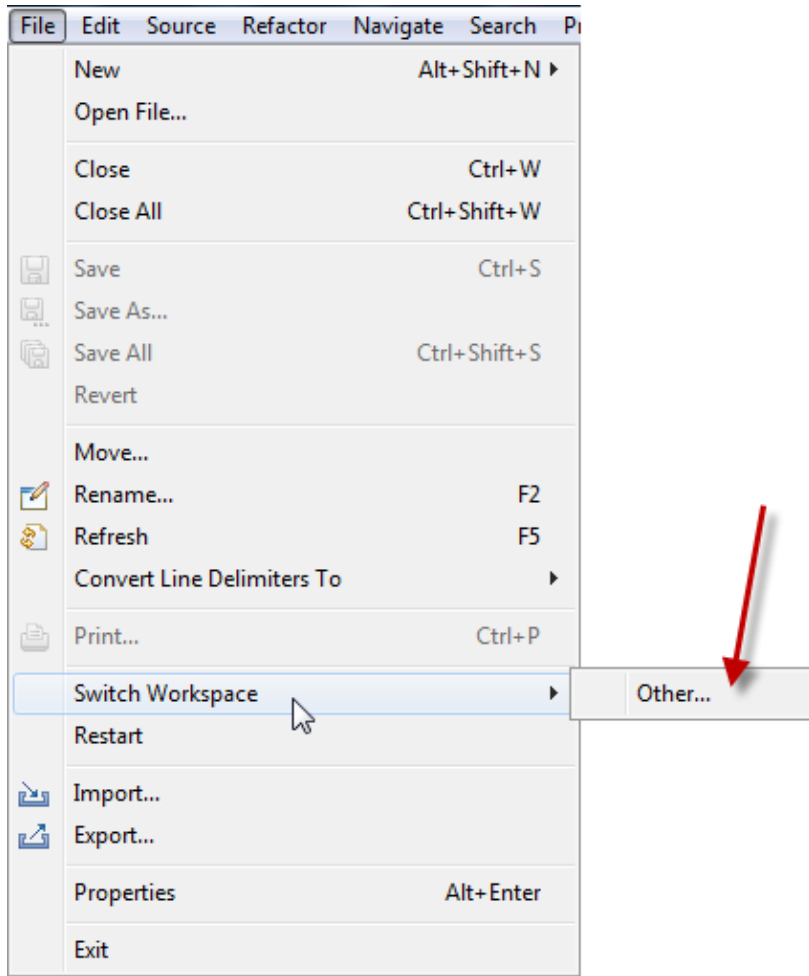


Now simply click 'Install'. You will end up with the Eclipse IDE being installed in the BTLE folder along with having 2 SDK's the original one and the updated one as shown below.

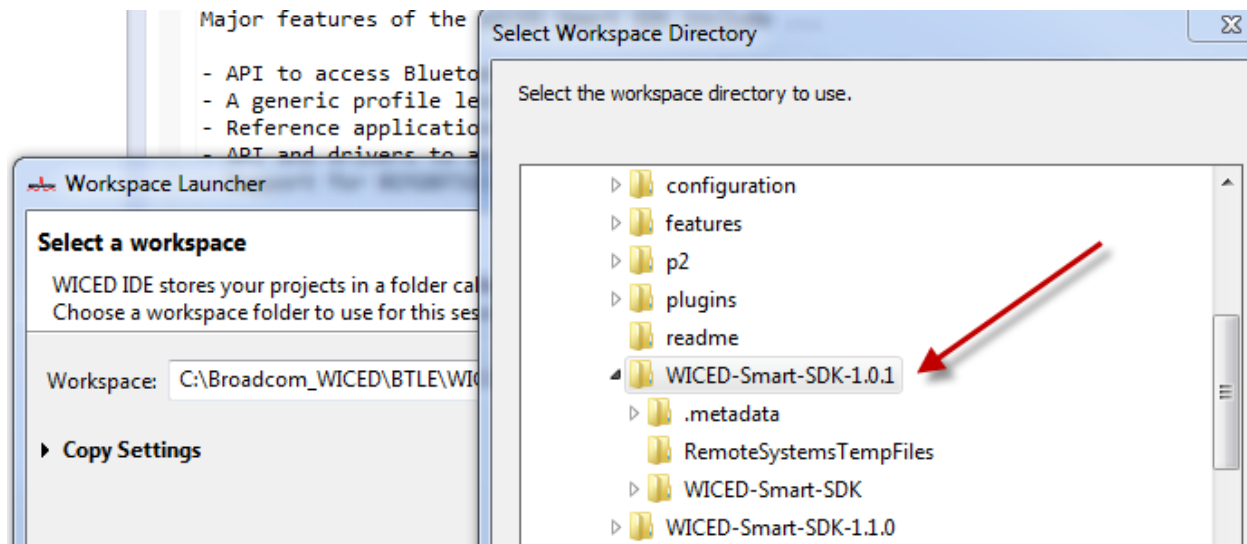


Continued...

To switch between the 2 SDK's simply go to File->Switch Workspace after opening up the Eclipse IDE and choose 'other...'



After clicking 'Other...' simply browse to the other SDK directory. Eclipse will restart using the SDK that you chose.



Eclipse will now have both Workspaces stored so you don't have to keep browsing to the different directories. Happy Coding!!

Frank Roberts

WICED Apps Engineer