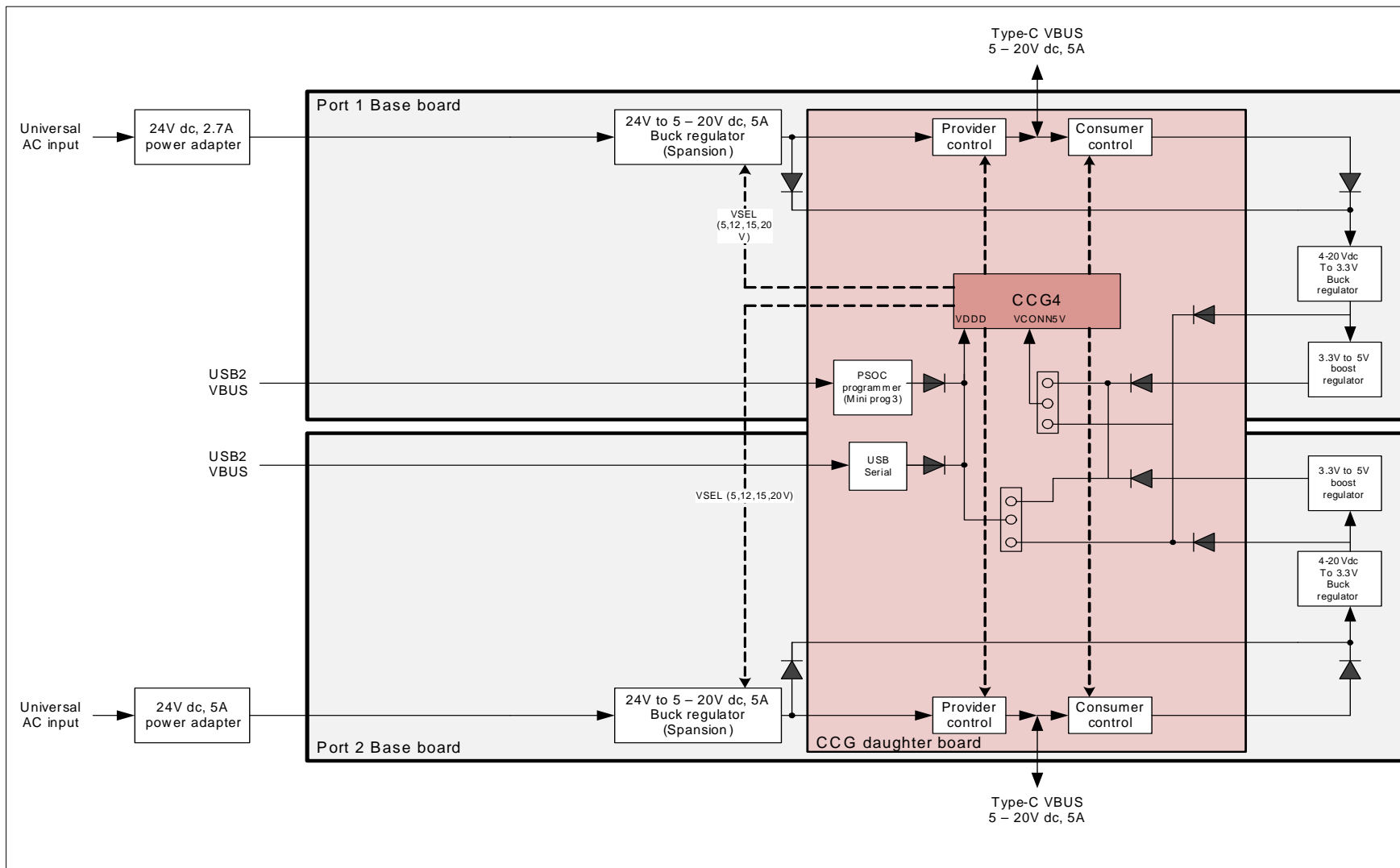


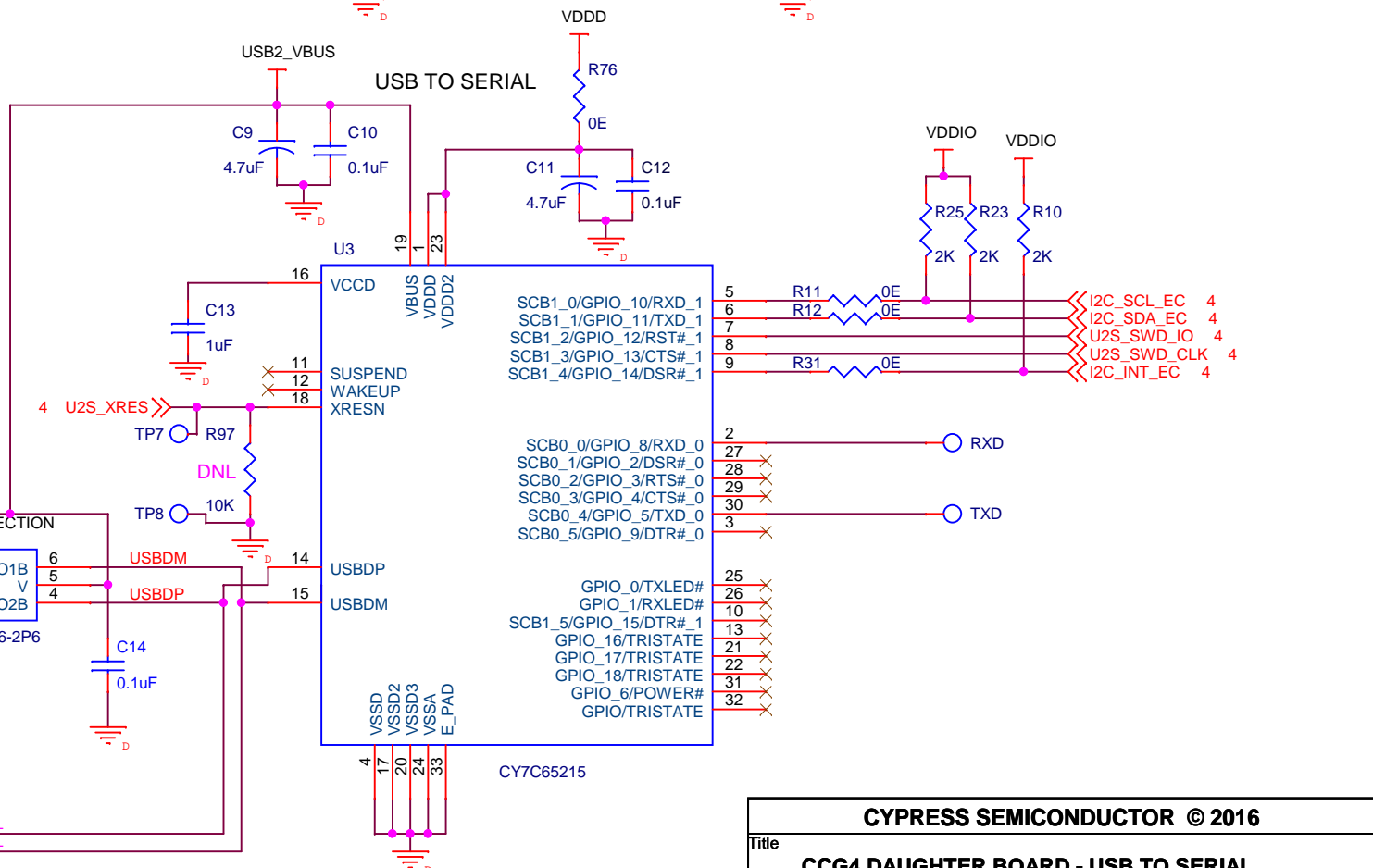
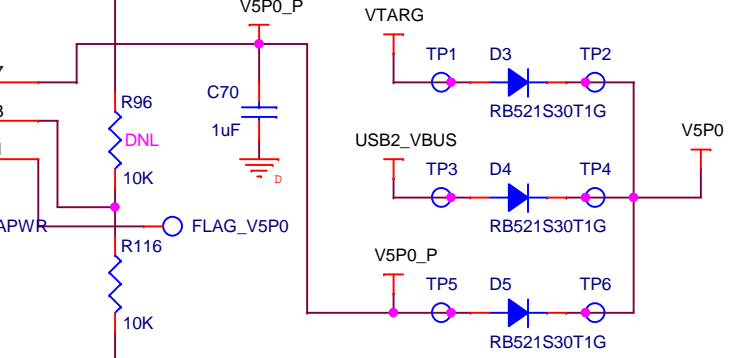
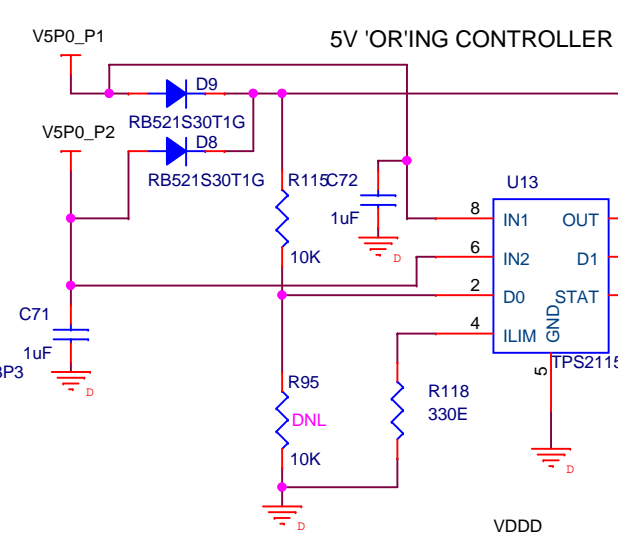
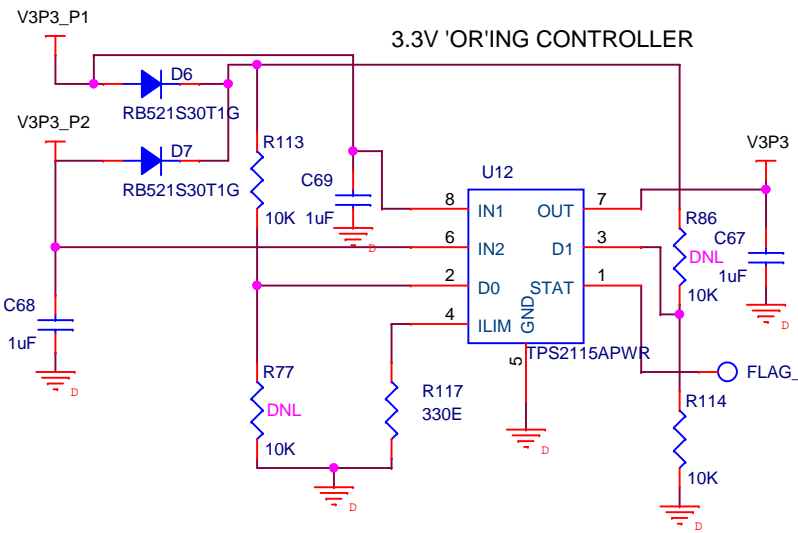
PCA: 121-60240-01  
 PCB: 600-60272-01  
 FAB DRW: 610-60276-01  
 ASSY DRW: 620-60284-01

<b>CYPRESS SEMICONDUCTOR © 2016</b>		
Title		
<b>CCG4 DAUGHTER BOARD - OVERALL DIAGRAM</b>		
Size	Document Number	Rev
A	<b>630-60282-01</b>	5.0
Date:	Thursday, April 28, 2016	Sheet 1 of 8

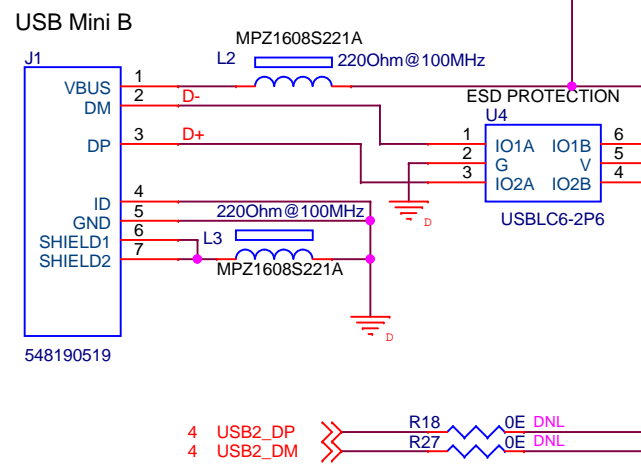


<b>CYPRESS SEMICONDUCTOR © 2016</b>		
Title		
<b>CCG4 DAUGHTER BOARD - POWER DISTRIBUTION</b>		
Size	Document Number	Rev
A	<b>630-60282-01</b>	5.0
Date:	Thursday, April 28, 2016	Sheet 2 of 8

PCA: 121-60240-01  
 PCB: 600-60272-01  
 FAB DRW: 610-60276-01  
 ASSY DRW: 620-60284-01

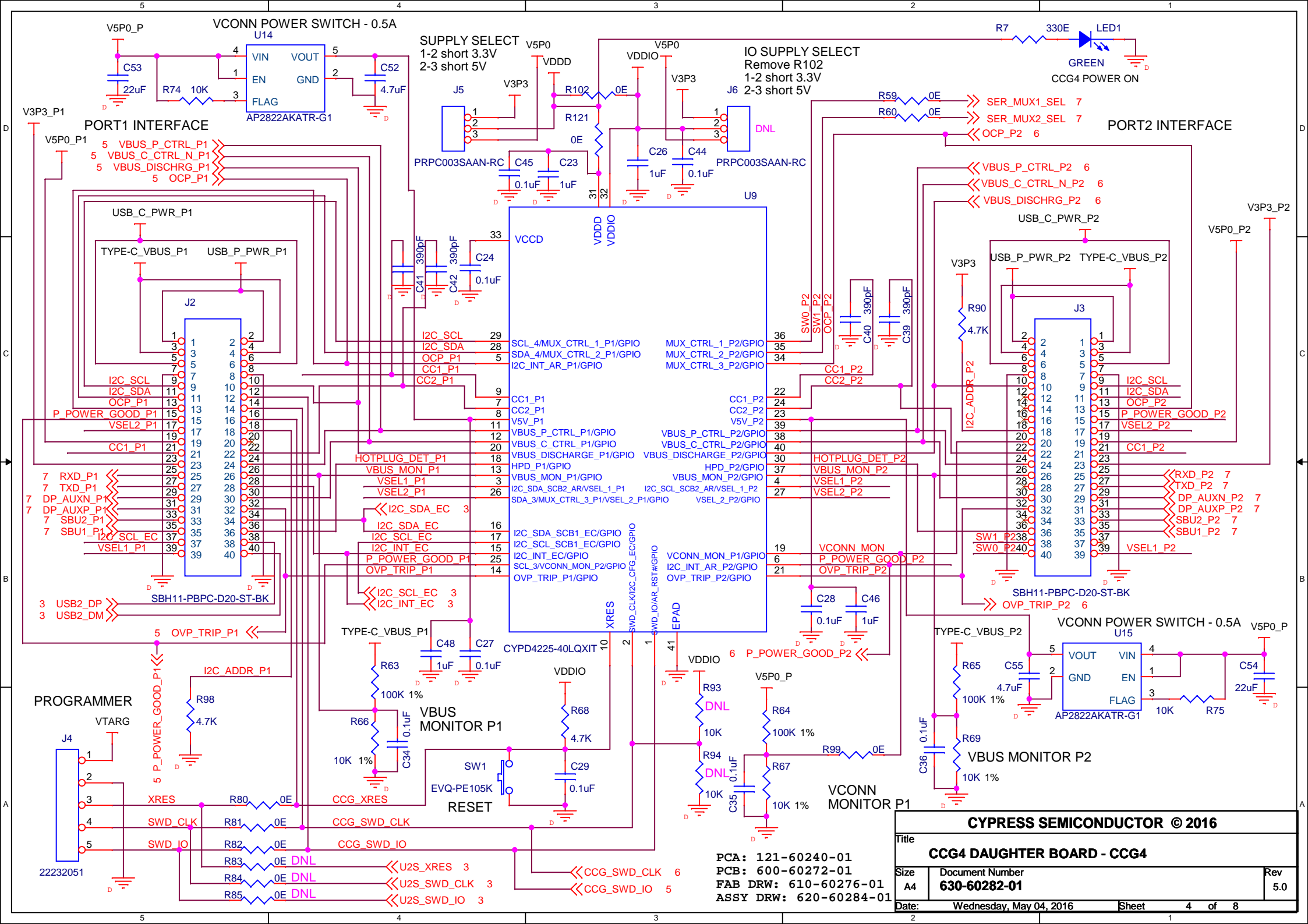


### USB2 DEBUG CONNECTOR



PCA: 121-60240-01  
 PCB: 600-60272-01  
 FAB DRW: 610-60276-01  
 ASSY DRW: 620-60284-01

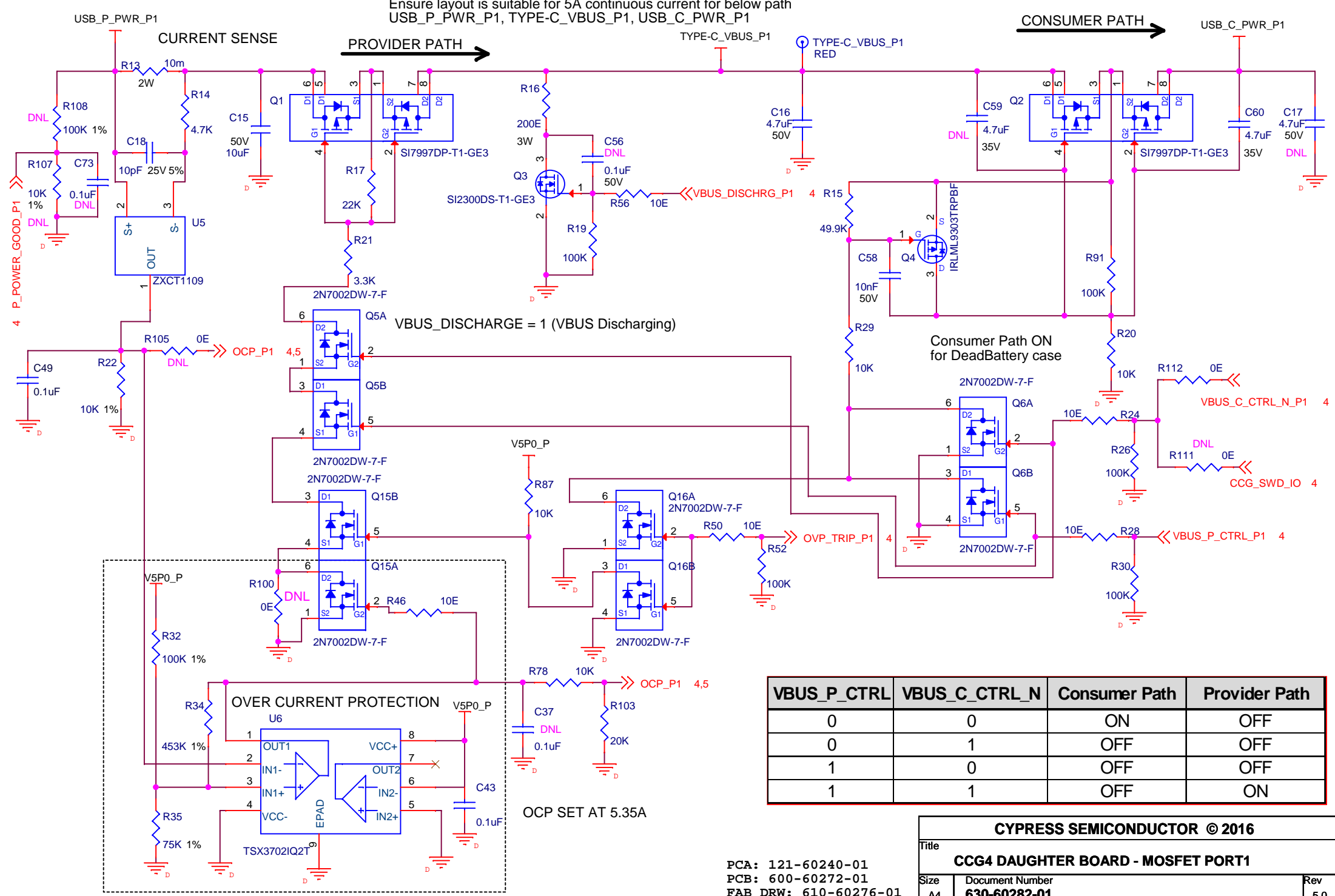
<b>CYPRESS SEMICONDUCTOR © 2016</b>		
Title		
<b>CCG4 DAUGHTER BOARD - USB TO SERIAL</b>		
Size	Document Number	Rev
A4	<b>630-60282-01</b>	5.0
Date:	Wednesday, May 04, 2016	Sheet 3 of 8



PCA: 121-60240-01  
 PCB: 600-60272-01  
 FAB DRW: 610-60276-01  
 ASSY DRW: 620-60284-01

<b>CYPRESS SEMICONDUCTOR © 2016</b>		
Title		
<b>CCG4 DAUGHTER BOARD - CCG4</b>		
Size	Document Number	Rev
A4	<b>630-60282-01</b>	5.0
Date:	Wednesday, May 04, 2016	Sheet 4 of 8

Ensure layout is suitable for 5A continuous current for below path  
 USB\_P\_PWR\_P1, TYPE-C\_VBUS\_P1, USB\_C\_PWR\_P1



**CURRENT SENSE**

**PROVIDER PATH**

**CONSUMER PATH**

VBUS\_DISCHARGE = 1 (VBUS Discharging)

Consumer Path ON for Dead Battery case

OCP SET AT 5.35A

VBUS_P_CTRL	VBUS_C_CTRL_N	Consumer Path	Provider Path
0	0	ON	OFF
0	1	OFF	OFF
1	0	OFF	OFF
1	1	OFF	ON

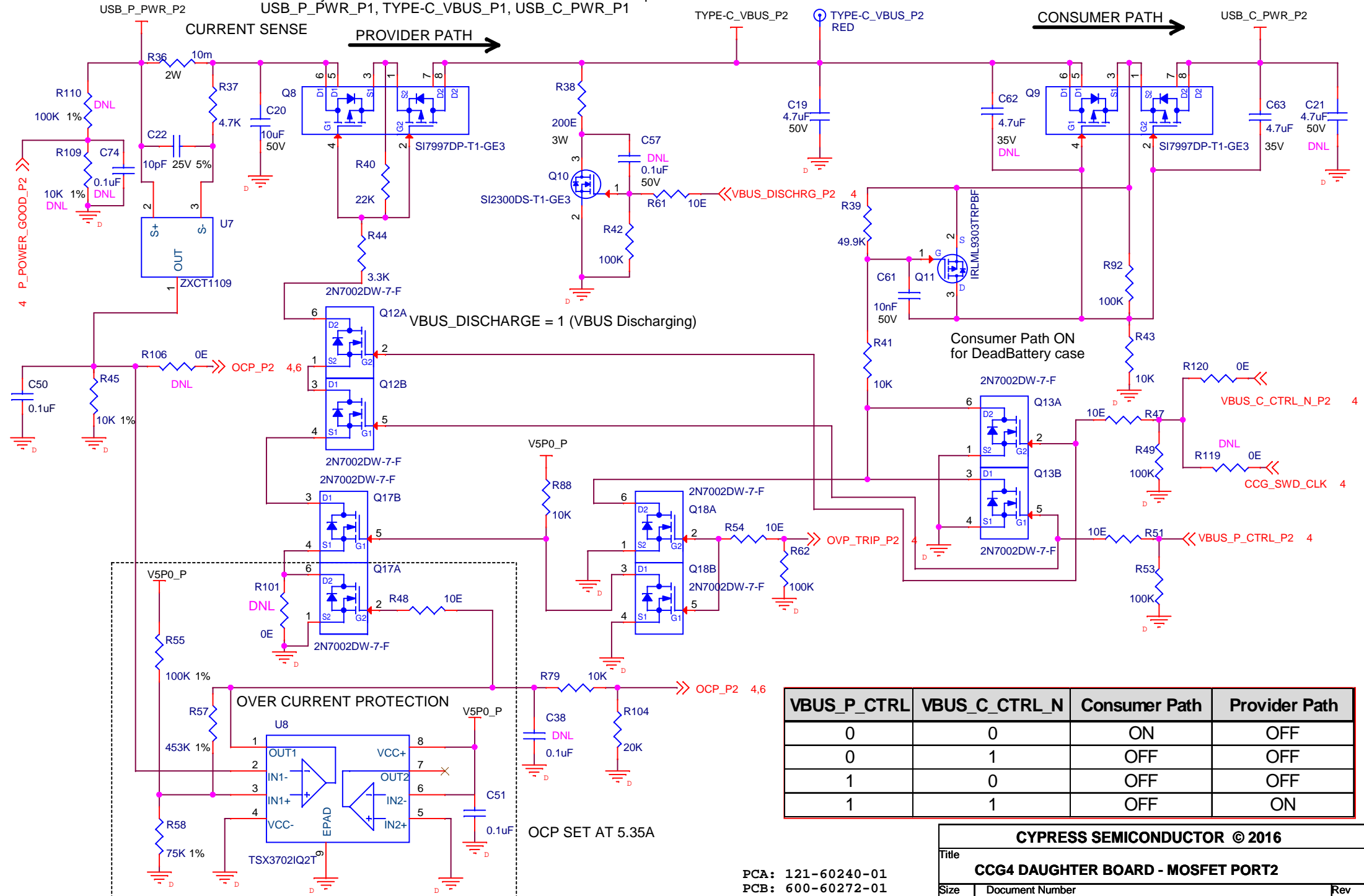
**CYPRESS SEMICONDUCTOR © 2016**

Title: **CCG4 DAUGHTER BOARD - MOSFET PORT1**

Size: A4	Document Number: <b>630-60282-01</b>	Rev: 5.0
Date: Thursday, April 28, 2016	Sheet: 5 of 8	

PCA: 121-60240-01  
 PCB: 600-60272-01  
 FAB DRW: 610-60276-01  
 ASSY DRW: 620-60284-01

Ensure layout is suitable for 5A continuous current for below path  
 USB\_P\_PWR\_P1, TYPE-C\_VBUS\_P1, USB\_C\_PWR\_P1



VBUS_P_CTRL	VBUS_C_CTRL_N	Consumer Path	Provider Path
0	0	ON	OFF
0	1	OFF	OFF
1	0	OFF	OFF
1	1	OFF	ON

OCP SET AT 5.35A

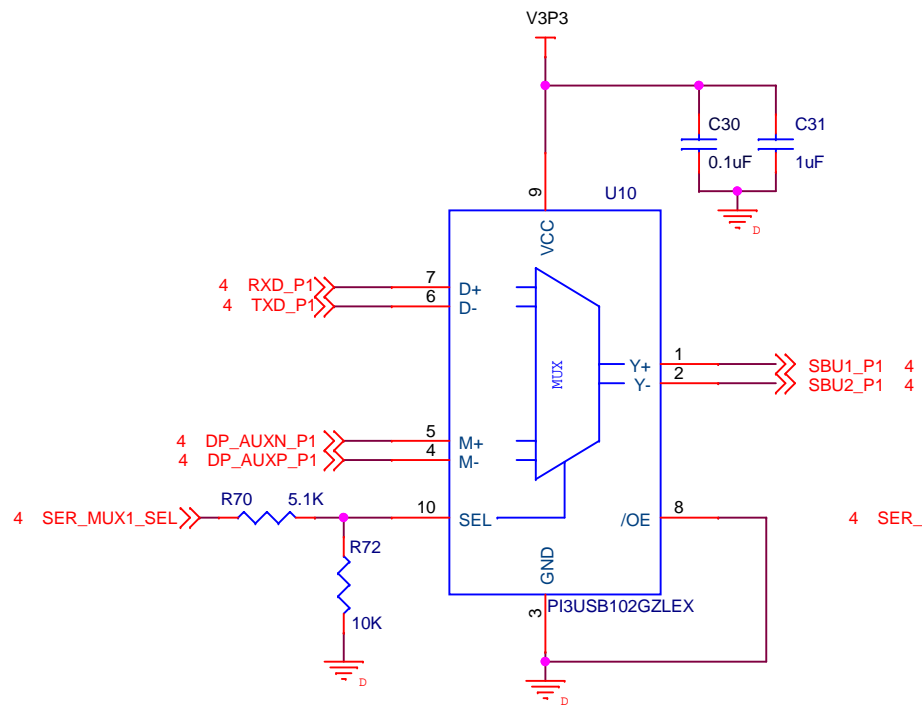
PCA: 121-60240-01  
 PCB: 600-60272-01  
 FAB DRW: 610-60276-01  
 ASSY DRW: 620-60284-01

**CYPRESS SEMICONDUCTOR © 2016**

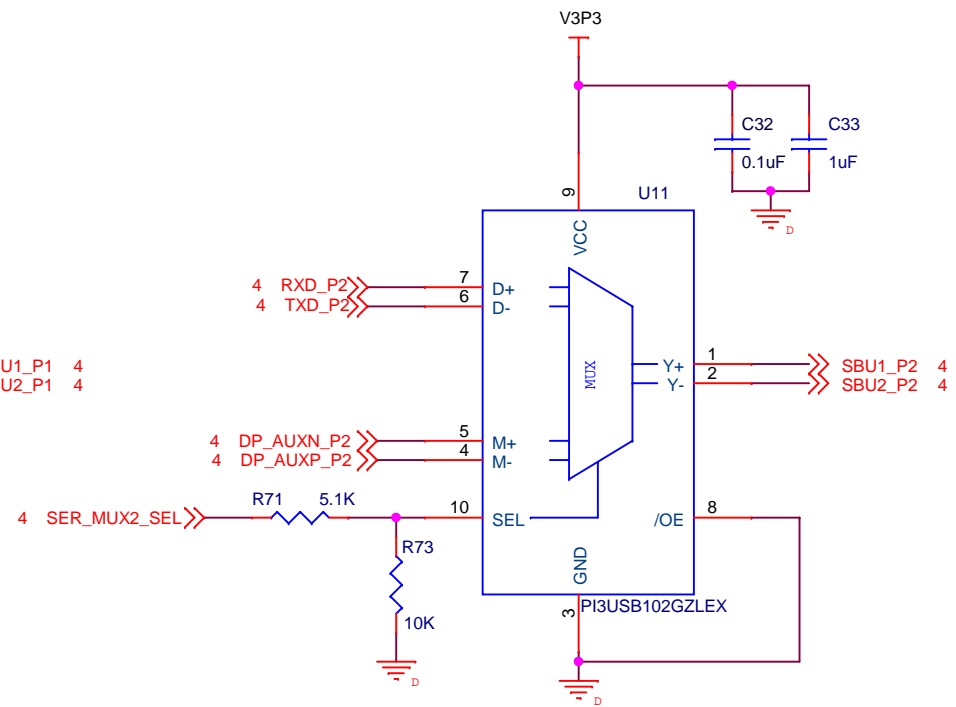
Title  
**CCG4 DAUGHTER BOARD - MOSFET PORT2**

Size A4	Document Number <b>630-60282-01</b>	Rev 5.0
Date Thursday, April 28, 2016	Sheet 6 of 8	

SERIAL MUX - PORT 1



SERIAL MUX - PORT 2



SBU OUTPUT SELECTION	
MUX SEL	OUTPUT
1	UART
0	DP AUX

PCA: 121-60240-01  
 PCB: 600-60272-01  
 FAB DRW: 610-60276-01  
 ASSY DRW: 620-60284-01

<b>CYPRESS SEMICONDUCTOR © 2016</b>		
Title		
<b>CCG4 DAUGHTER BOARD - SERIAL MUX</b>		
Size	Document Number	Rev
A4	<b>630-60282-01</b>	5.0
Date:	Thursday, April 28, 2016	Sheet 7 of 8

Revision	Description of the change
2.0	1. USB TO SERIAL CHIP RESISTOR CONNECTION CHANGES FOR I2C LINES (3 SIGNALS) AND THEIR PULL UP CHANGED FROM V3P3 TO VDDIO 2. R15, R39 VALUE CHANGED AS 49.9K 3. R29, R41 VALUE CHANGED AS 20K 4. R33, R56 REMOVED 5. Q16, Q17 CONNECTIONS CHANGED 6. R78, R79 VALUE CHANGED AS 10K 7. R103, R104 10K PULL DOWN RES ADDED 8. R63, R64, R65 CHANGED FROM 11K TO 100K 9. R69 FROM 1K TO 10K 10. R66, R67 FROM 3.3K TO 10K 11. POWER SWITCH (AP2822AKATR-G1) CIRCUITS WERE ADDED AND R75, R76 REMOVED. 12. R64, R71, R87, R88 REMOVED
3.0	1. R29, R41 VALUE CHANGED FROM 20K TO 10K 2. R89, 0E RES REMOVED 3. R108, R107, C73 RESISTER AND CAPACITOR ADDED USB_P_PWR_P1 4. R109, R110, C74 RESISTER AND CAPACITOR ADDED USB_P_PWR_P2 5. U12, U13 PART CHANGED FROM TCK323G TO TPS2114APWR 6. CCG4 XRES PULL UP CHANGED FROM VDDD TO VDDIO AND RESISTOR(R68), CAPACITOR(C29) VALUE CHANGED AS 100K AND 1uF 7. D6-D9 AND R113-R118 ADDED IN ORING CIRCUITS. 8. J1 PART NUMBER CHANGED FROM "1734035-2" TO "548190519"
4.0	1. R103, R104 VALUES CHANGED FROM 10K TO 20K 2. R105, R106 CHANGED AS DNL AND R78, R79 AND R103, R104 DNL REMOVED.
5.0	1. Q1,Q2,Q8,Q9 PART NUMBER CHANGED AS "SI7997DP-T1-GE3" 2. C53,C54 VALUES CHANGED FROM 4.7uF TO 22uF AND C52 VALUE FROM 1uF TO 4.7uF. 3. R68 VALUE CHANGED FROM 100K TO 4.7K AND C29 FROM 1uF TO 0.1uF 4. C56,C57 (0.1uF) AND R56,R61(10E) ADDED. 5. R15,Q4,C25 AND R39,Q11,C47 CONNECTION NODE CHANGED. 6. R91, R92 VALUES CHANGED TO 100K. 7. PART NUMBER FOR Q3, Q10 CHANGED AS "SI2300DS-T1-GE3" 8. R76 0E PART ADDED IN THE U3 POWER LINE VDDD. 9. R107,R108,R109,R110,C73,C74 MARKED AS DNL. 10. R111,R112 AND R119,R120 0E ADDED. 11. C39-C42 VALUES CHANGED FROM 330pF TO 390pF. 12. C25,C47 WERE REMOVED. 13. C58-C63 WERE ADDED (C58,C61-10nF & C59,C60,C62,C63-4.7uF) 14. R121 0E ADDED. 15. R17, R40 VALUES CHANGED FROM 49.9K TO 22K. 16. R21, R44 VALUES CHANGED FROM 10K TO 3.3K. 17. C29,C37,C38 PART NUMBER CHANGED.

PCA: 121-60240-01  
 PCB: 600-60272-01  
 FAB DRW: 610-60276-01  
 ASSY DRW: 620-60284-01

<b>CYPRESS SEMICONDUCTOR © 2016</b>		
Title <b>CCG4 DAUGHTER BOARD - REV HISTORY</b>		
Size A4	Document Number <b>630-60282-01</b>	Rev 5.0
Date: Thursday, April 28, 2016		Sheet 8 of 8