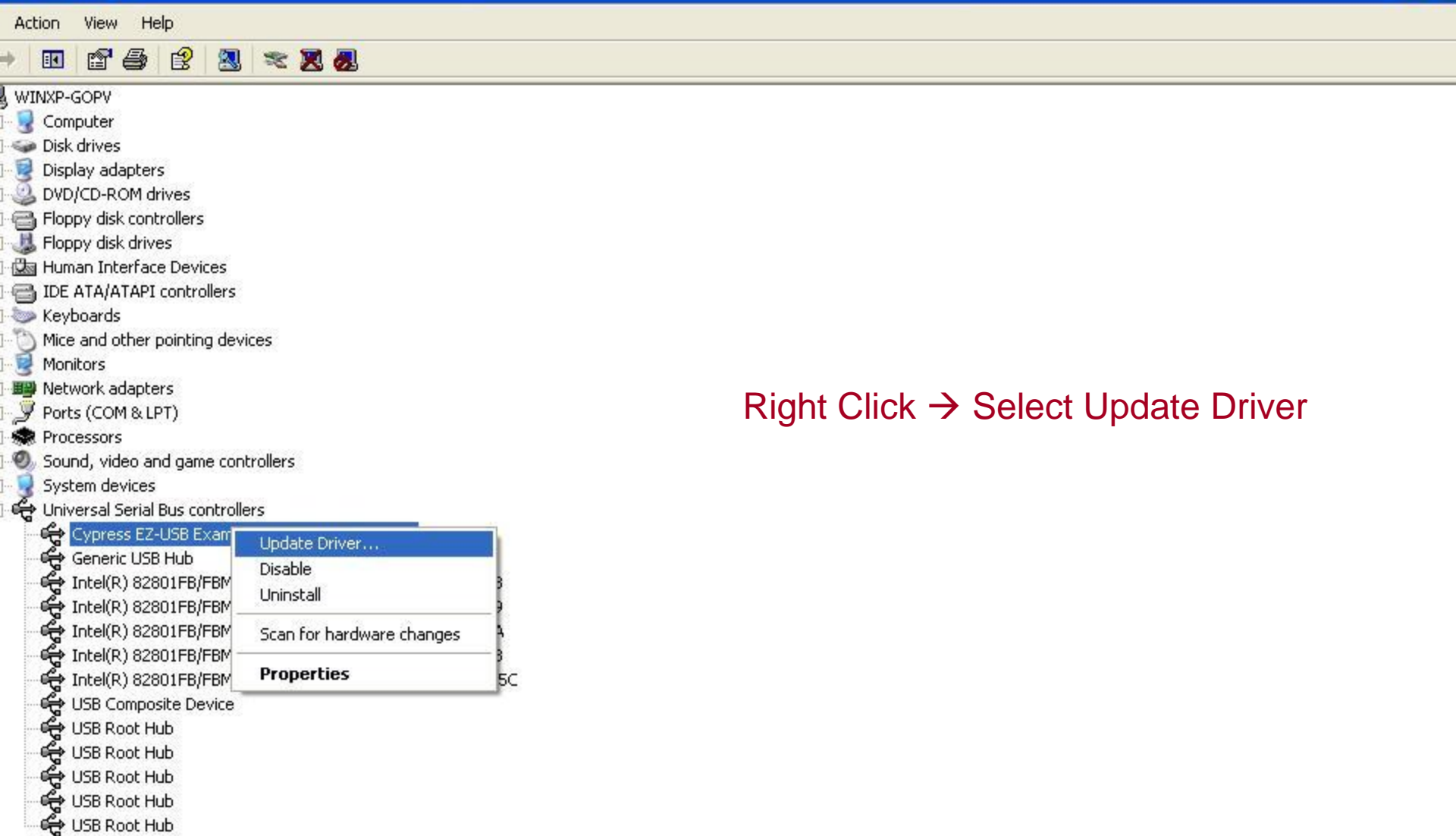


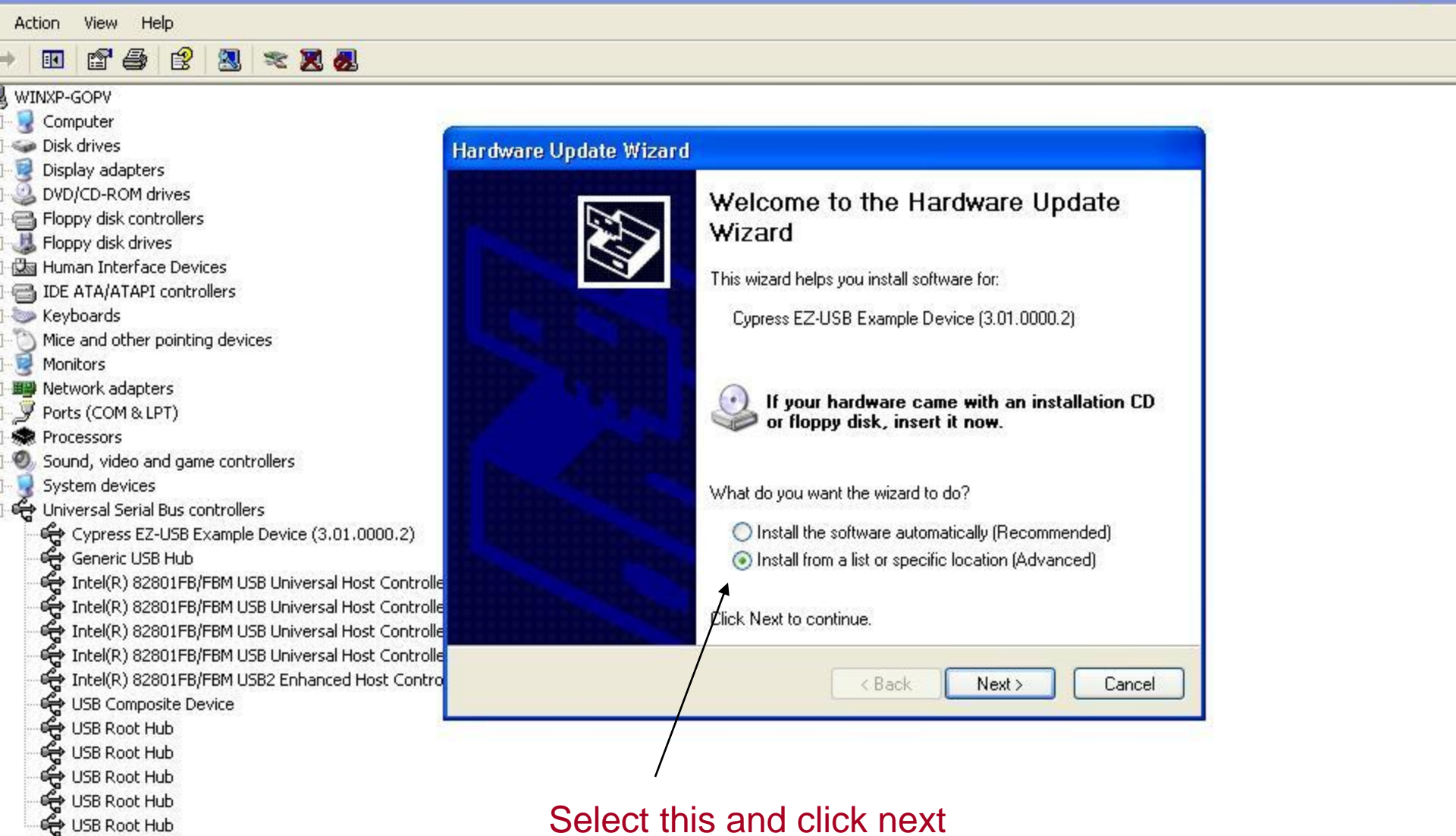
1) Goto Device Manager

( My Computer-Right Click –Properties-Hardware-Device Manager)

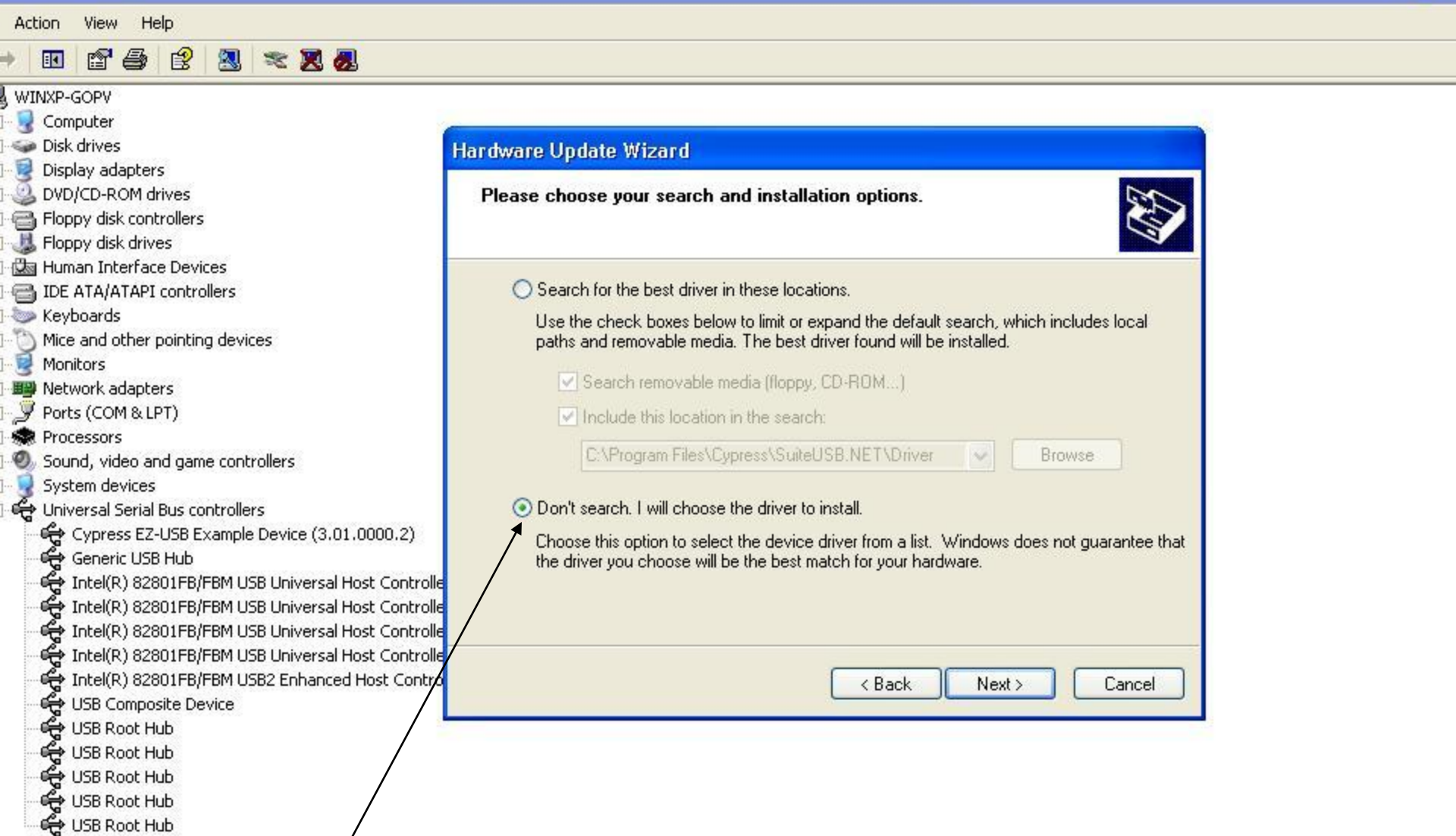
2) You can find Cypress Product in USB controller



Right Click → Select Update Driver



Select this and click next



Select this and Click Next

Action View Help

WINXP-GOPV

- Computer
- Disk drives
- Display adapters
- DVD/CD-ROM drives
- Floppy disk controllers
- Floppy disk drives
- Human Interface Devices
- IDE ATA/ATAPI controllers
- Keyboards
- Mice and other pointing devices
- Monitors
- Network adapters
- Ports (COM & LPT)
- Processors
- Sound, video and game controllers
- System devices
- Universal Serial Bus controllers
  - Cypress FX2 - No EEPROM (0x8613)
  - Generic USB Hub
  - Intel(R) 82801FB/FBM USB Universal
  - Intel(R) 82801FB/FBM USB Universal
  - Intel(R) 82801FB/FBM USB Universal
  - Intel(R) 82801FB/FBM USB Universal
  - Intel(R) 82801FB/FBM USB2 Enhance
  - USB Composite Device
  - USB Root Hub
  - USB Root Hub
  - USB Root Hub
  - USB Root Hub
  - USB Root Hub

### Hardware Update Wizard

Select the device driver you want to install for this hardware.

Select the manufacturer and model of your hardware device and then click Next. If you have a disk that contains the driver you want to install, click Have Disk.

☒ Show compatible hardware

Model

- Cypress EZ-USB FX2 (68613) - EEPROM missing
- Cypress EZ-USB FX2LP - EEPROM missing
- Cypress FX2 - No EEPROM (0x8613)
- Cypress FX2 - No EEPROM (3.01.0000.2)

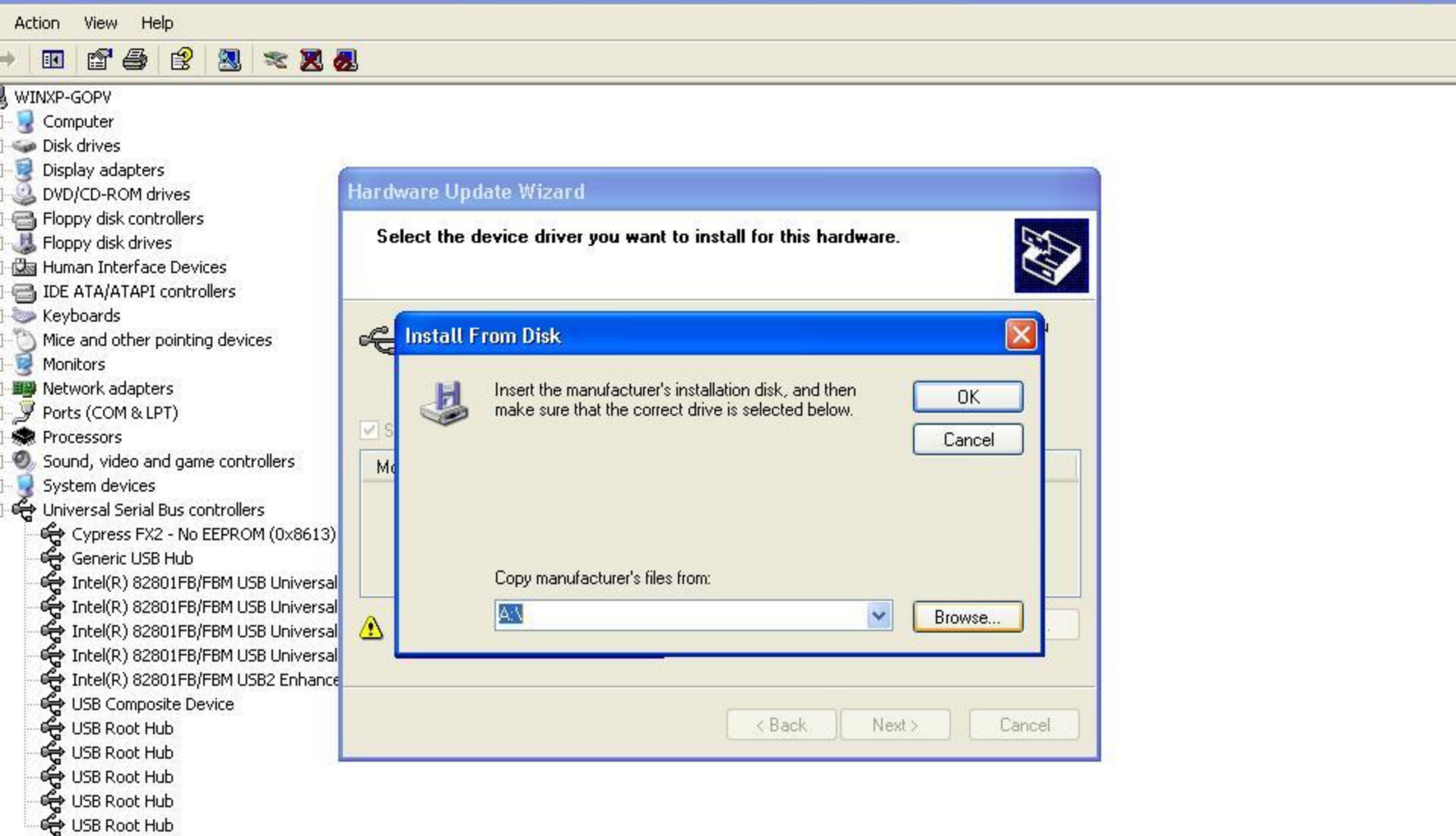
**This driver is not digitally signed!**  
[Tell me why driver signing is important](#)

Have Disk...

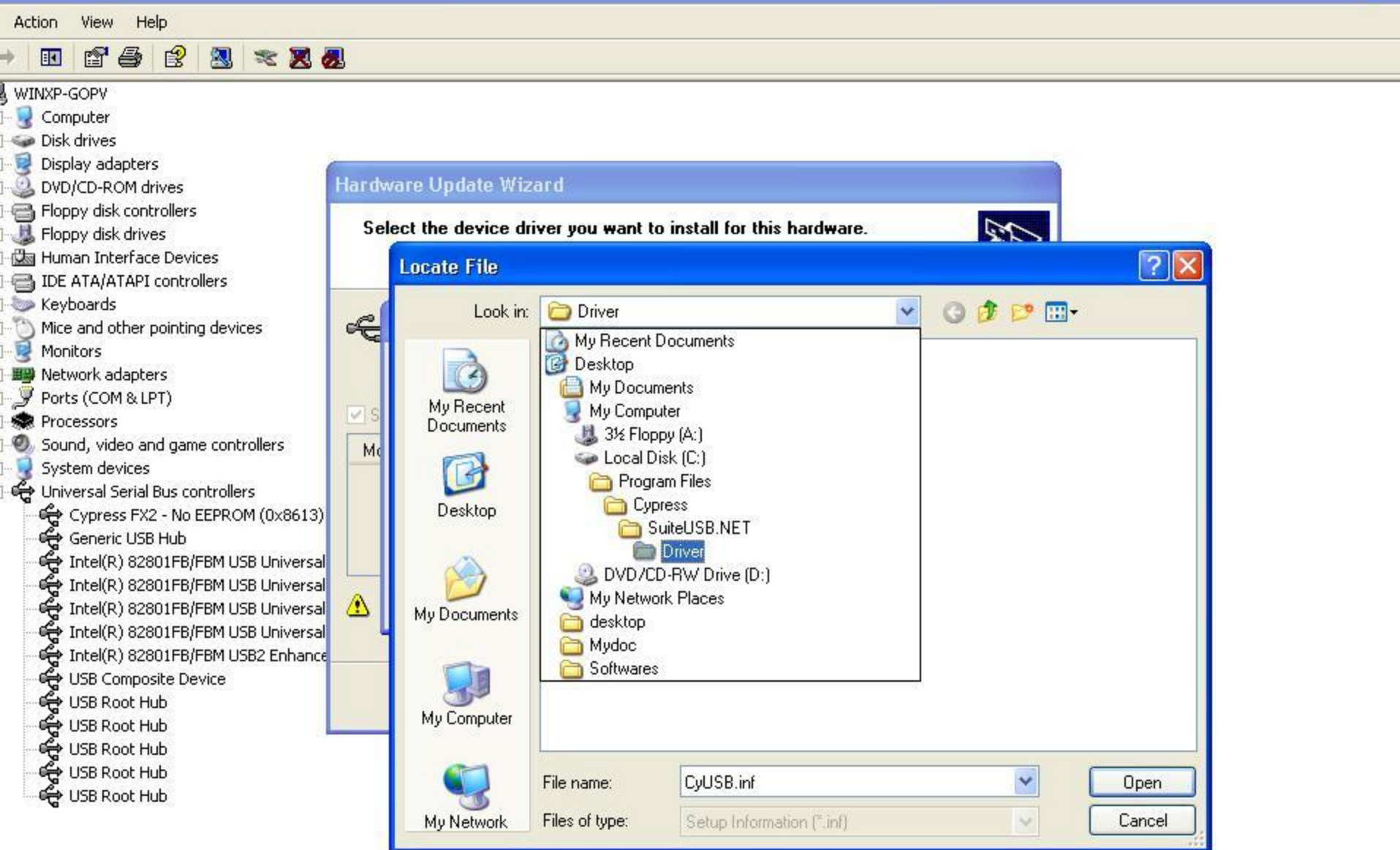
< Back Next > Cancel

Click Have Disk

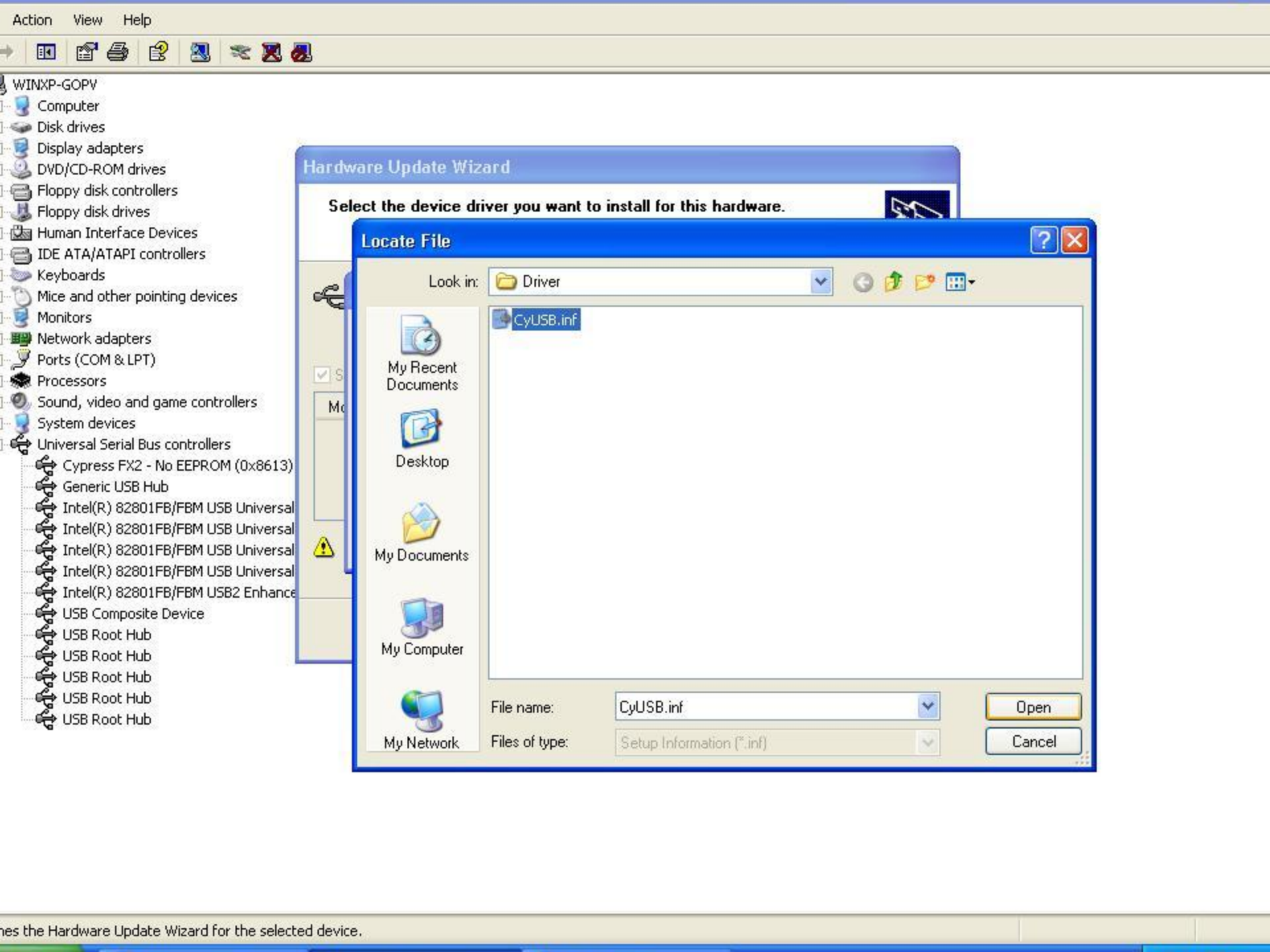




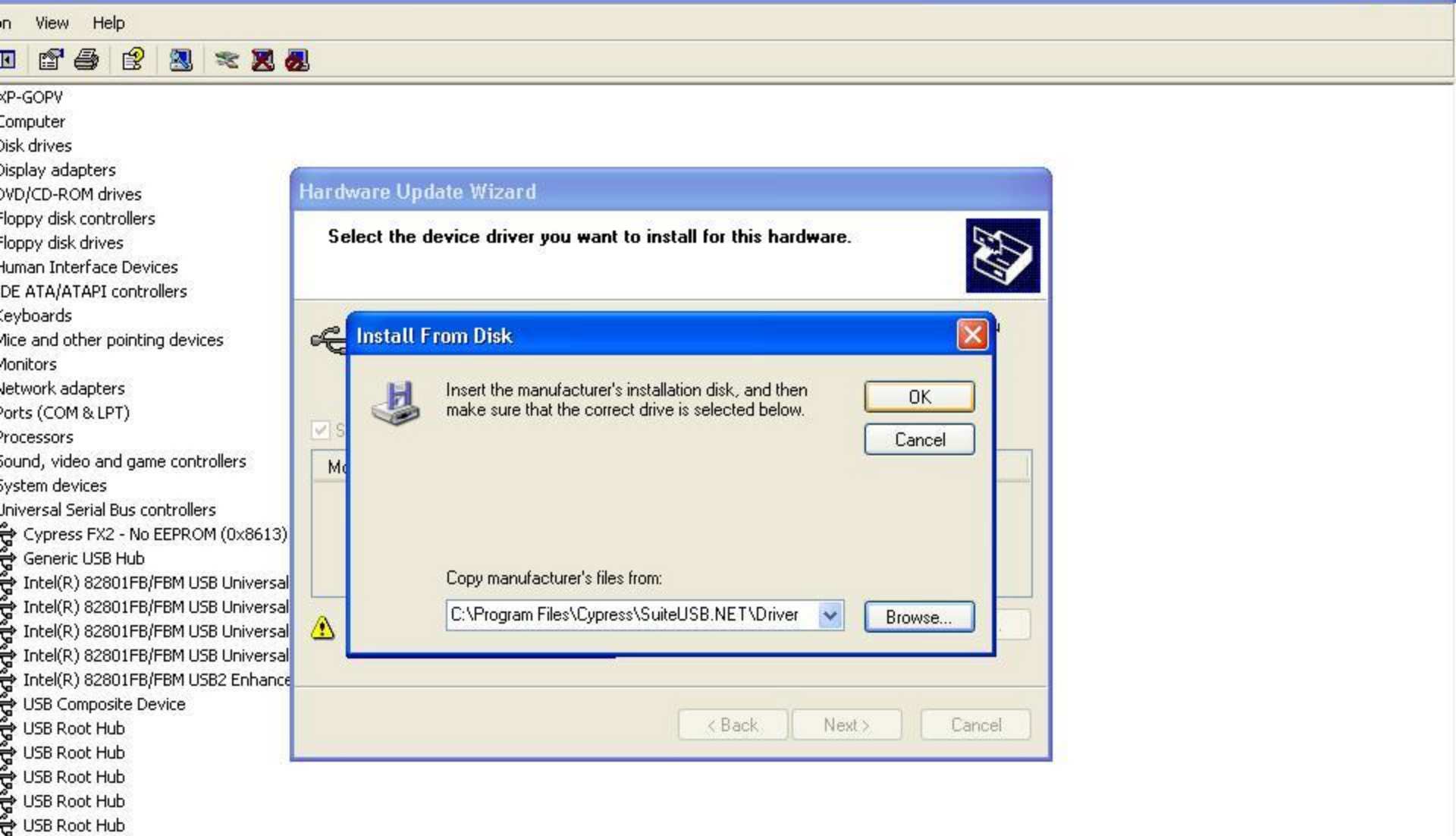
Click Browse



Select C:\Program files\Cypress\SuiteUSB.Net\Driver\CyUSB.inf







Click OK

Action View Help

WINXP-GOPV

- Computer
- Disk drives
- Display adapters
- DVD/CD-ROM drives
- Floppy disk controllers
- Floppy disk drives
- Human Interface Devices
- IDE ATA/ATAPI controllers
- Keyboards
- Mice and other pointing devices
- Monitors
- Network adapters
- Ports (COM & LPT)
- Processors
- Sound, video and game controllers
- System devices
- Universal Serial Bus controllers
  - Cypress FX2 - No EEPROM (0x8613)
  - Generic USB Hub
  - Intel(R) 82801FB/FBM USB Universal
  - Intel(R) 82801FB/FBM USB Universal
  - Intel(R) 82801FB/FBM USB Universal
  - Intel(R) 82801FB/FBM USB Universal
  - Intel(R) 82801FB/FBM USB2 Enhance
  - USB Composite Device
  - USB Root Hub
  - USB Root Hub
  - USB Root Hub
  - USB Root Hub
  - USB Root Hub

### Hardware Update Wizard


Select the device driver you want to install for this hardware.

Select the manufacturer and model of your hardware device and then click Next. If you have a disk that contains the driver you want to install, click Have Disk.

☒ Show compatible hardware

Model

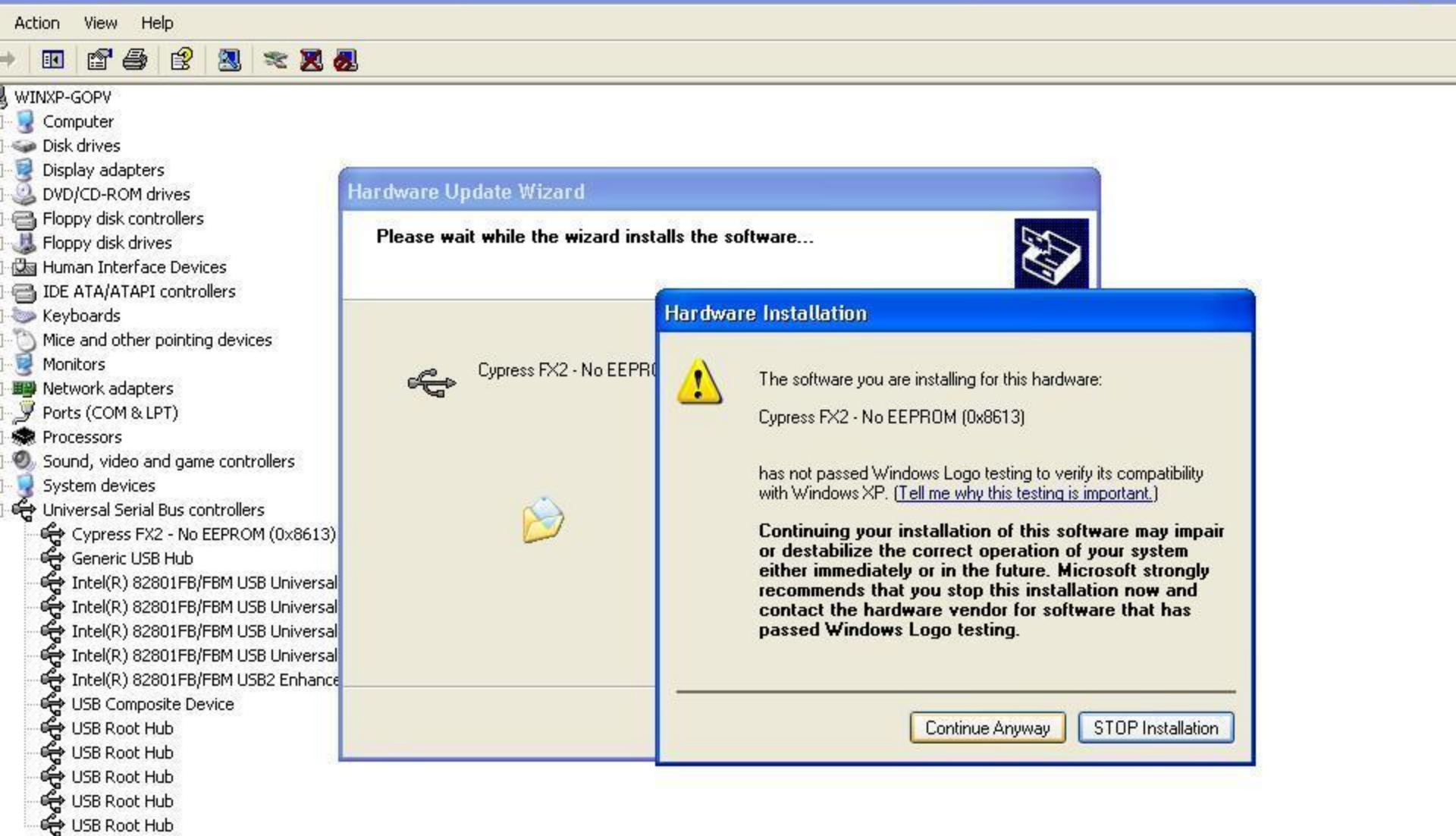
Cypress FX2 - No EEPROM (0x8613)

 **This driver is not digitally signed!**  
[Tell me why driver signing is important](#)

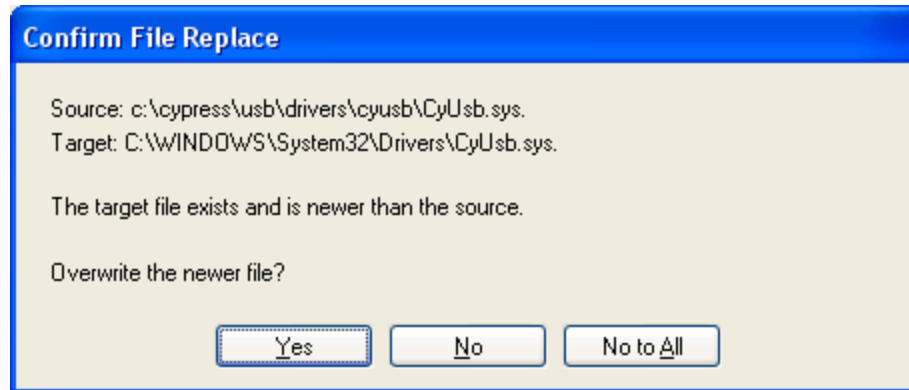
Have Disk...

< Back Next > Cancel

Click Next



Click Continue Anyway



Click Yes to downgrade the version of CyUSB.sys




ActionViewHelp


WINXP-GOPV

- Computer
- Disk drives
- Display adapters
- DVD/CD-ROM drives
- Floppy disk controllers
- Floppy disk drives
- Human Interface Devices
- IDE ATA/ATAPI controllers
- Keyboards
- Mice and other pointing devices
- Monitors
- Network adapters
- Ports (COM & LPT)
- Processors
- Sound, video and game controllers
- System devices
- Universal Serial Bus controllers
  - Cypress FX2 - No EEPROM (0x8613)
  - Generic USB Hub
  - Intel(R) 82801FB/FBM USB Universal
  - Intel(R) 82801FB/FBM USB Universal
  - Intel(R) 82801FB/FBM USB Universal
  - Intel(R) 82801FB/FBM USB Universal
  - Intel(R) 82801FB/FBM USB2 Enhance
  - USB Composite Device
  - USB Root Hub
  - USB Root Hub
  - USB Root Hub
  - USB Root Hub
  - USB Root Hub

Hardware Update Wizard



Completing the Hardware Update Wizard

The wizard has finished installing the software for:  
 Cypress FX2 - No EEPROM (0x8613)

Click Finish to close the wizard.

< Back

Finish

Cancel