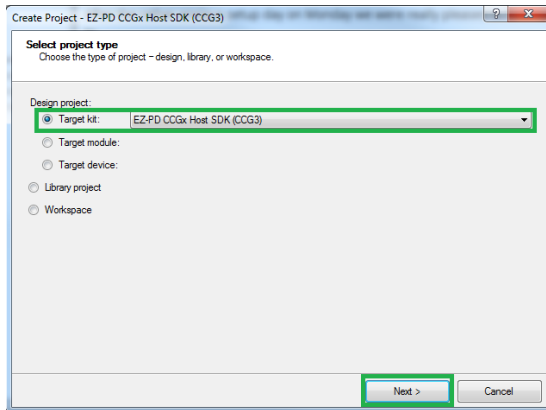


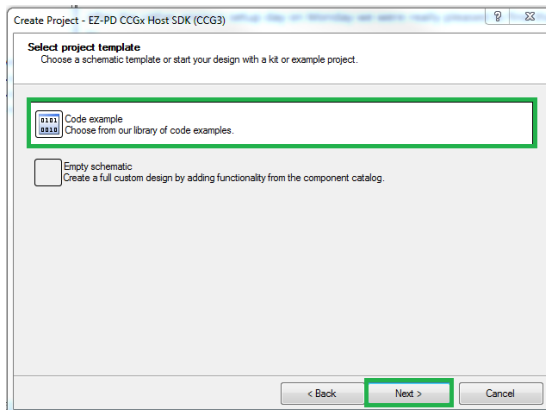
1. New created CCGx project based on example code. (Use CCGx Host SDK, since the CCGx project in the Host SDK have includes i2c-boot project.)

a. File >> New >> Project...

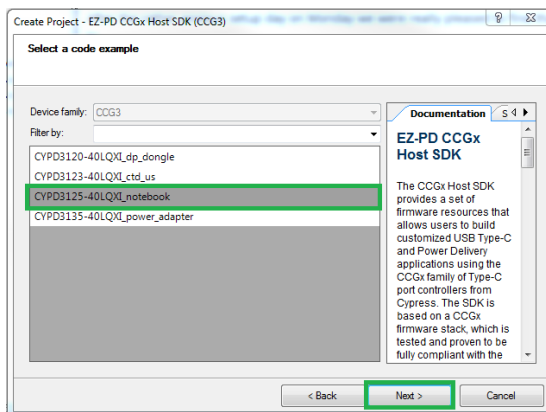
b. Select project type >> Target kit: EZ-PD CCGx HOST SDK (CCG3)



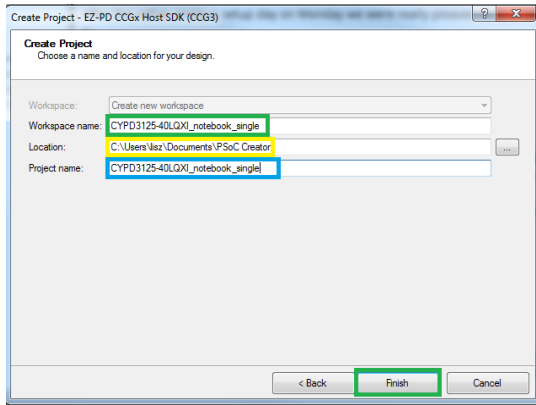
c. Select project template >> Code example



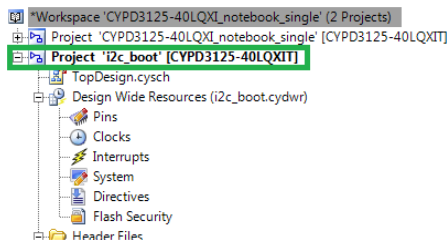
d. Select a code example >> CYPD3125-40LQXI\_notebook



e. Create Project>> name workspace/specify location/name project name.

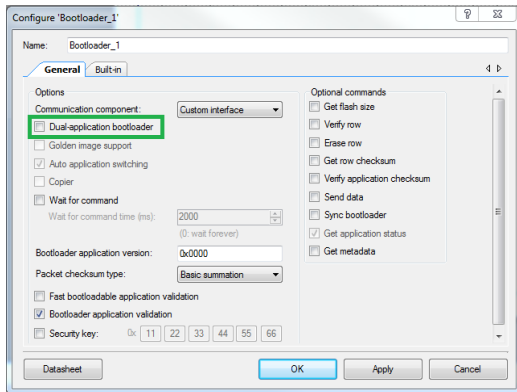


f. Add i2c\_boot project into workspace: right click “Workspace”, select Add>> Existing Project...

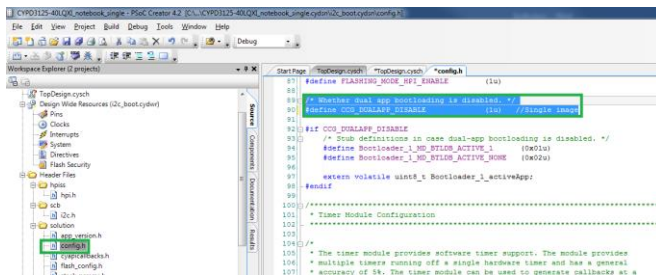


## 2. Boot-loader Project Changes.

a. Open TopDesign.cysch of i2-boot project. And then double click Bootloader\_1 component to Make sure that the “Dual-application bootloader” option is unchecked.



b. Open config.h file from i2c-boot project head files. Enable define CCG\_DUALAPP\_DISABLE (CCG\_DUALAPP\_DISABLE is set as 0u for dual images by default.)

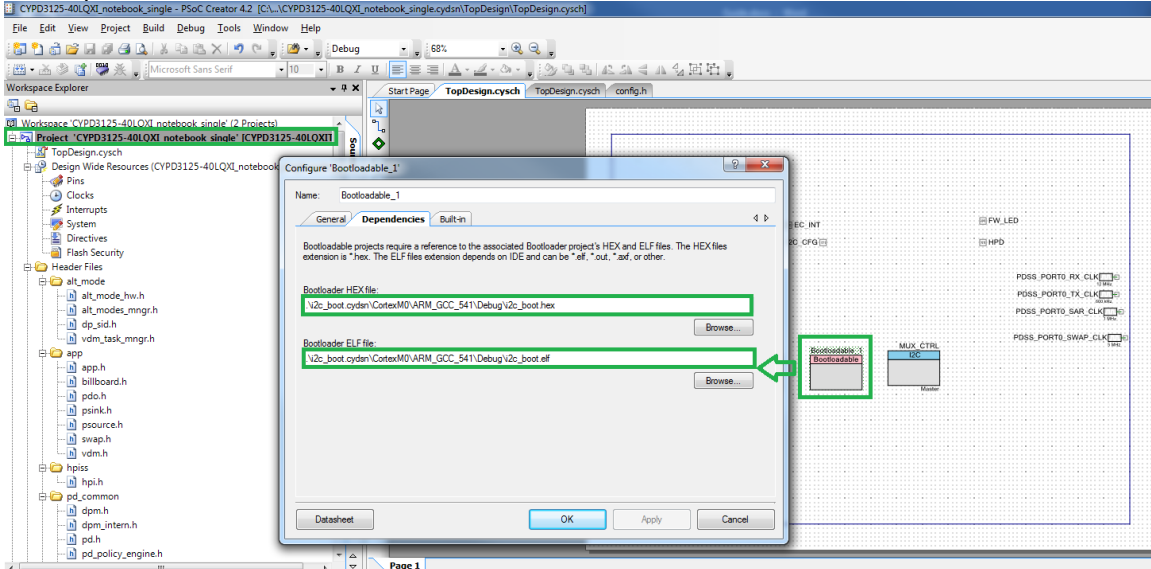


c. Compile the project to generate the customized single bootloader binary (.hex & .elf).

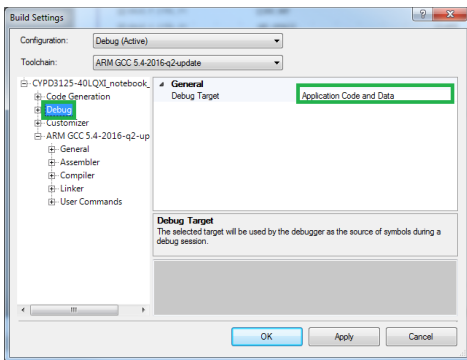
### 3. Application Project Changes (notebook example).

a. Pre-build CYPD3125-40LQXI\_notebook. cyprj project and generate all relates files.

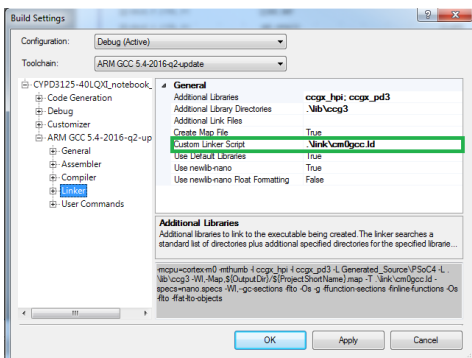
b. Open the CYPD3125-40LQXI\_notebook. cyprj project using PSoC Creator 4.2 (the latest version). Double click Bootloadable\_1 component and updates the. hex file and .elf file from above process.



b. Update Project -> Build Settings -> Debug -> Debug Target from Application Code and Data 2 to Application Code and Data.



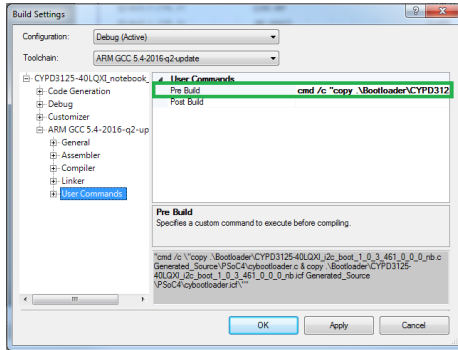
c. Update linker script for single image build.



d. Open the “Project -> Build Settings -> ARM GCC -> User Commands” section and add the following pre-build command.

```
cmd /c "copy .\Bootloader\CYPD3125-40LQXI_i2c_boot_1_0_3_461_0_0_0_nb.c  
Generated_Source\PSoC4\cybootloader.c & copy .\Bootloader\CYPD3125-  
40LQXI_i2c_boot_1_0_3_461_0_0_0_nb.icf Generated_Source\PSoC4\cybootloader.icf"
```

-----Make sure step a is completed-----



e. Build All project.